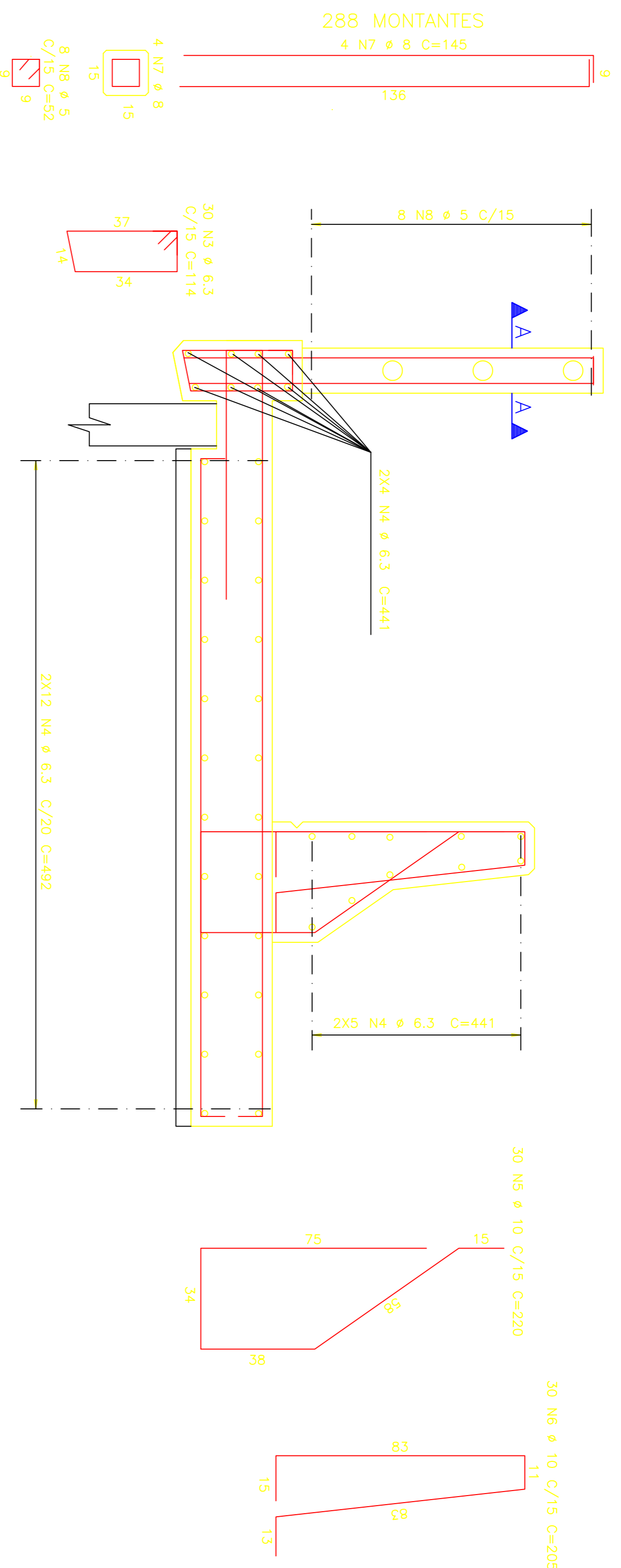


ARMADURA DAS BARREIRAS E GUARDA-CORPO

ESCALA 1:12,5

66X

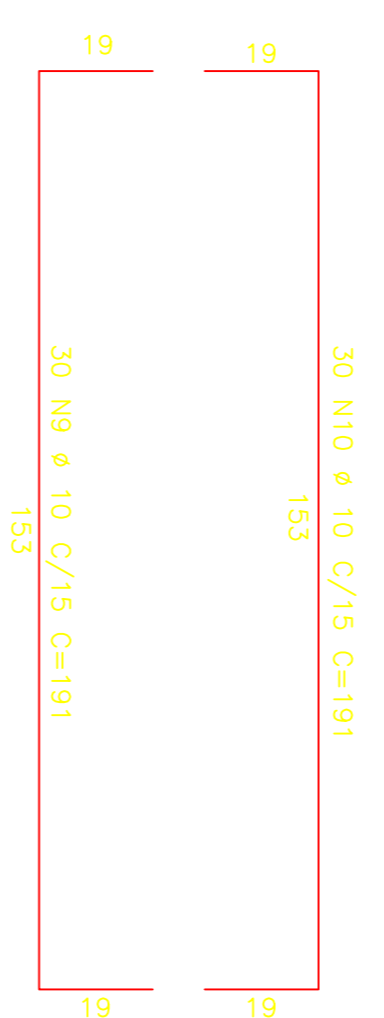
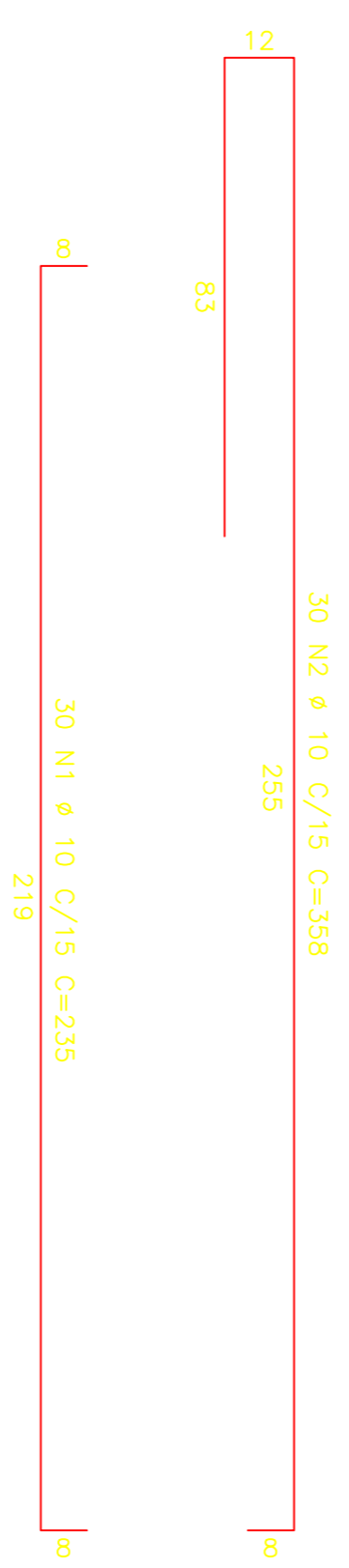
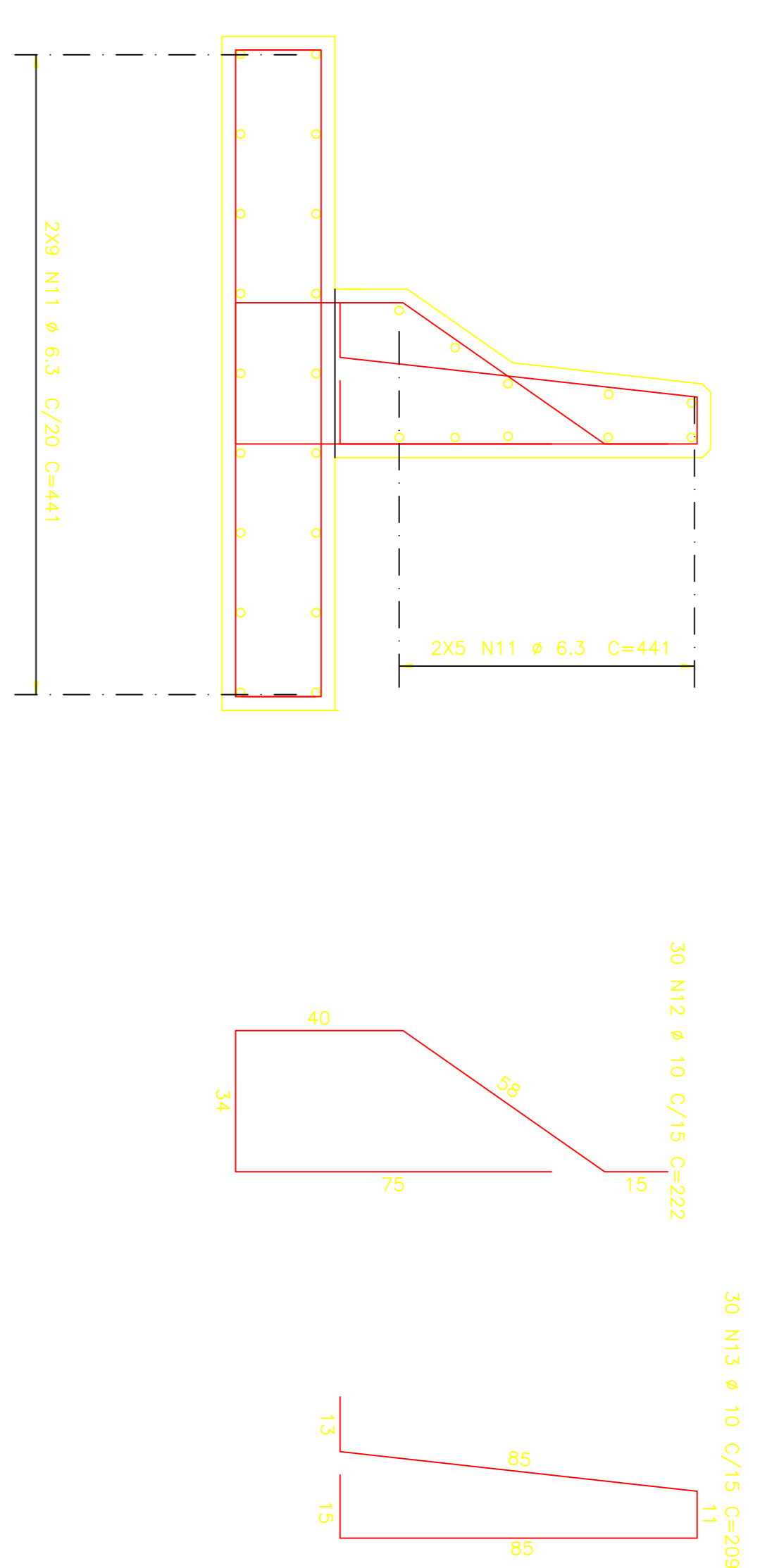


CORTE A - A
ESCALA 1:12,5

ARMADURA DAS BARREIRAS

ESCALA 1:12,5

106X



QUADRO DE FERRO			
N	BITOLA	QUANT.	C.U.NIT.
N1	10,0	2880	235
N2	10,0	2880	358
N3	6,3	2880	114
N4	6,3	4032	441
N5	10,0	2880	220
N6	10,0	2880	205
N7	8,0	1152	145
N8	5,0	2304	52
N9	10,0	3180	191
N10	10,0	3180	191
N11	6,3	2968	441
N12	10,0	3180	222
N13	10,0	3180	209
R E S U M O			
BITOLA	C.TOTAL	PESO	
5,0	119808	192	
6,3	3415320	8539	
8,0	167040	669	
10,0	5317180	34759	
PESO TOTAL =		44159	

NOTAS

- 1 - fck=30MPa
- 2 - AGO CA=50
- 3 - COBRIMENTO DA ARMADURA: C=3cm

BRANCA 0.100
AMARELA 0.200
VERDE 0.200
VERMELHA 0.450
AZUL 0.600

HUGO A. MOTA
CONSULTORIA E ENGENHARIA DE PROJETOS
hugomoto@fortaleza.com.br

ENG. RESPONSÁVEL
CREA - 42472/O-CE

ENG. CO-AUTOR
ENG. RESPONSÁVEL
CREA - 88217/O-CE

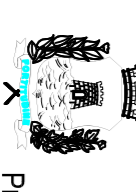
01 ALTERAÇÃO DAS ARMADURAS PARA GUARDA-CORPO DE 447 cm
00 EMISSÃO INICIAL
REV. DISCRIMINAÇÃO


01/2014
03/2013

RESP. DATA

Obra: **VADUITO SOBRE A OSÓRIO DE PAIVA - EXECUTIVO**

Assunto: **ARMADURA DAS BARREIRAS NOS ACESSOS TRILHO EM TERRA ARMADA**


Fortaleza
 Prefeitura de


SEINF

SECRETARIA DE DESENVOLVIMENTO URBANO E INFRA-ESTRUTURA

PRESENTE	DATA
MARCO/2013	22