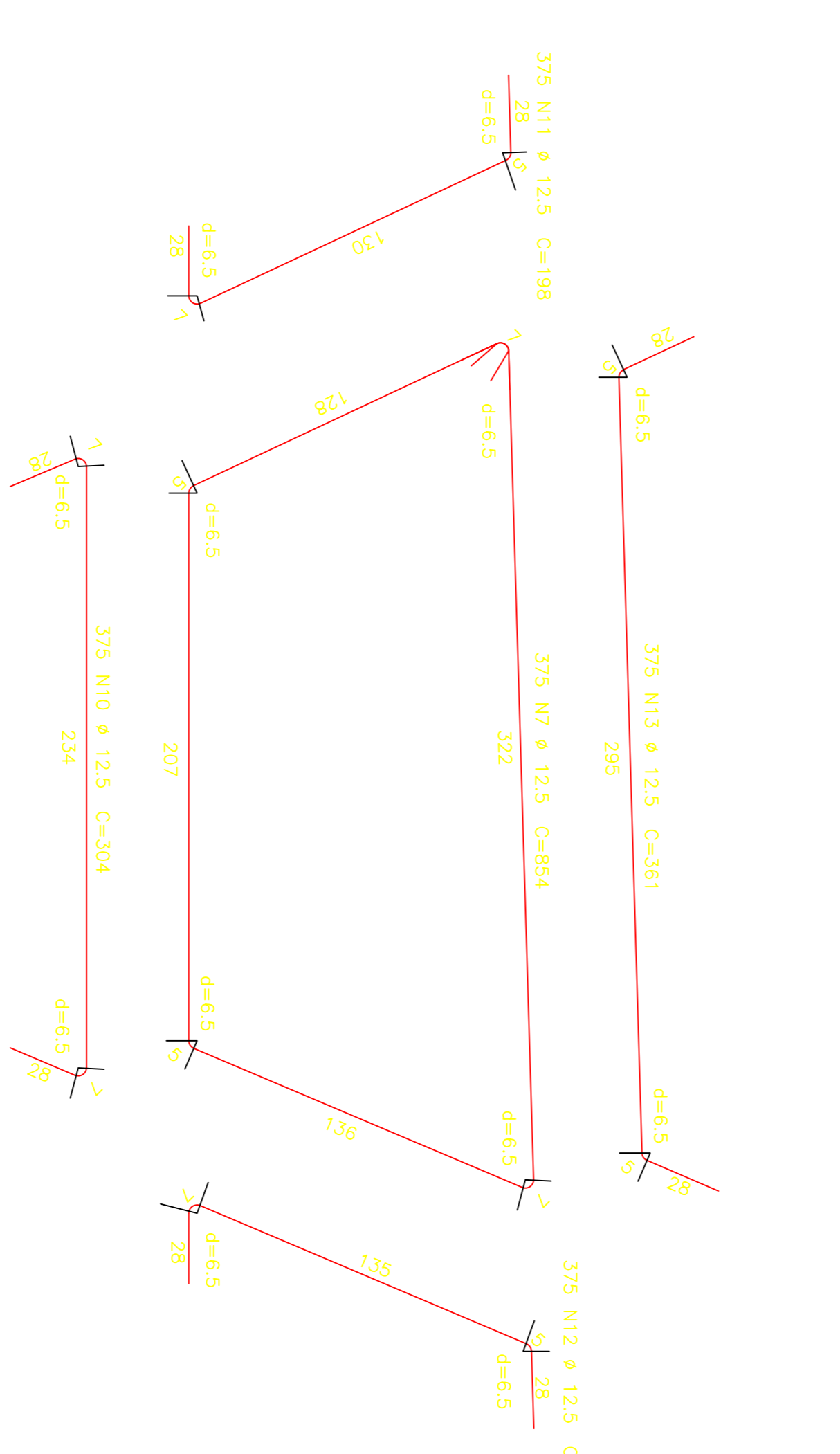
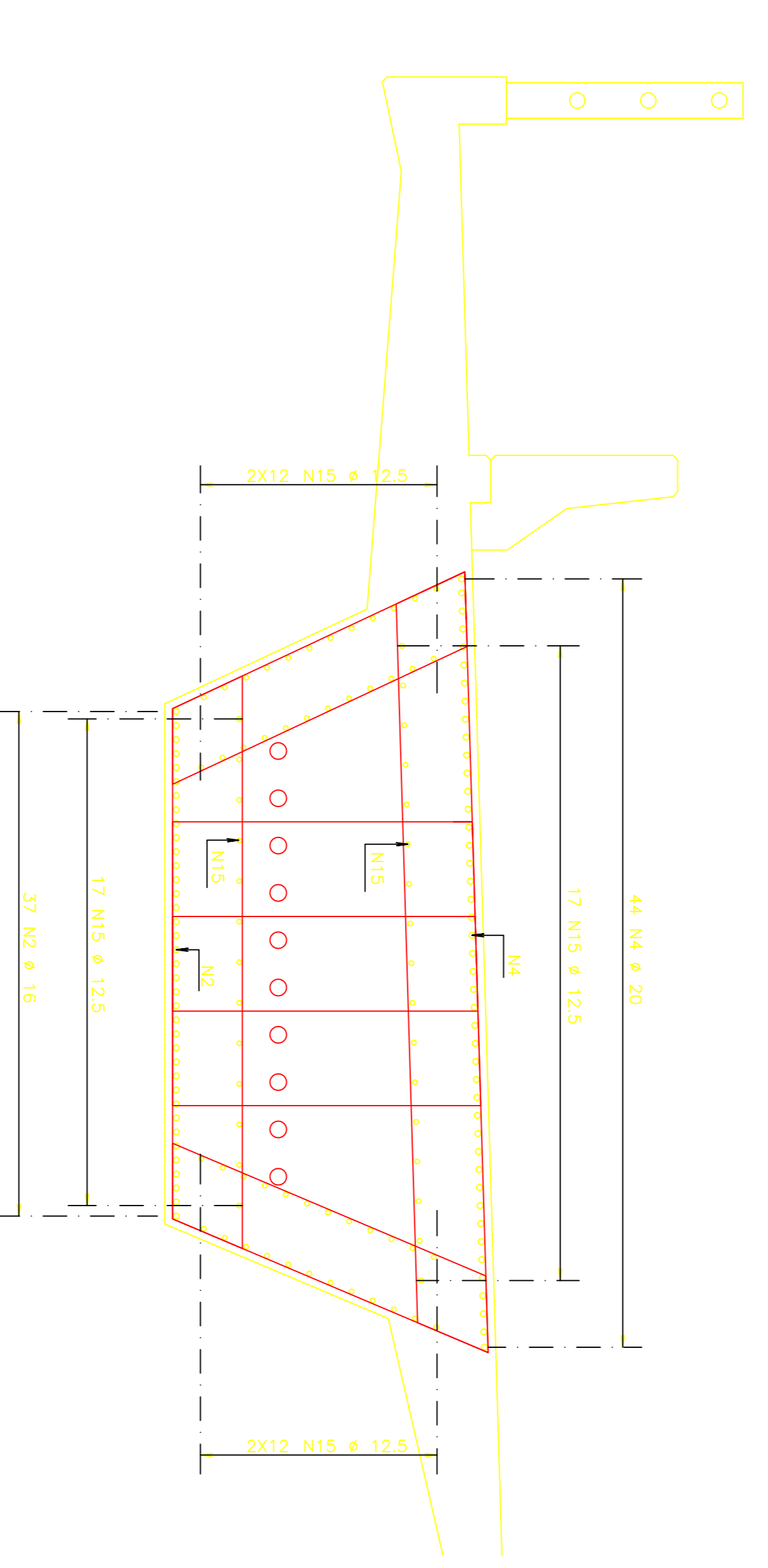
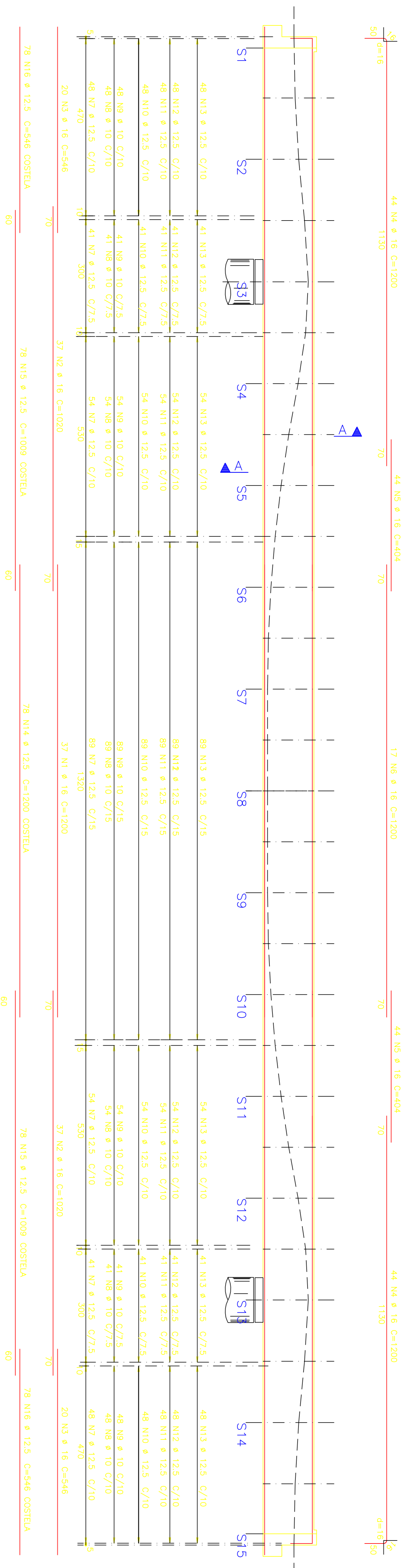


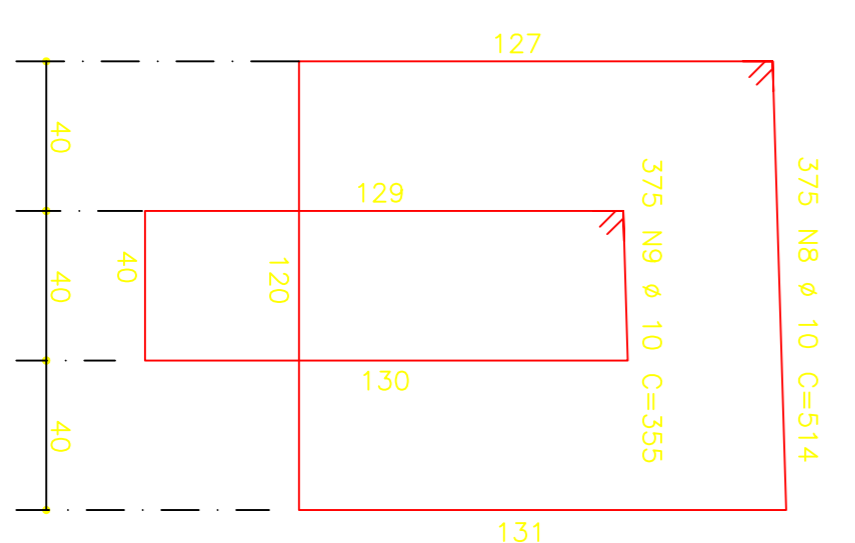
ARMADURA DAS VIGAS PRINCIPAIS (NERVURAS) 4X

ESCALA 1:80



ACO	POS	BIT (mm)	QUANT	COMPRIMENTO UNIT (cm)	TOTAL (cm)	PESO (kg)
ARMADURA DAS VIGAS PRINCIPAIS (NERVURAS) (X4)						
50A	1	16	148	1200	177600	8212
50A	2	16	296	1020	301920	42247
50A	3	16	160	546	87360	19409
50A	4	16	352	1200	422400	19409
50A	5	16	352	1404	493608	19409
50A	6	16	352	1500	528000	19409
50A	7	16	1500	854	1281000	19409
50A	8	10	1500	514	771000	19409
50A	9	10	1500	355	532500	19409
50A	10	12.5	1500	304	456000	19409
50A	11	12.5	1500	198	297000	19409
50A	12	12.5	1500	203	304500	19409
50A	13	12.5	1500	361	541500	19409
50A	14	12.5	312	1200	374400	19409
50A	15	12.5	624	1009	629616	19409
50A	16	12.5	624	546	340704	19409

RESUMO ACO CA. 50-60			
ACO	BIT (mm)	COMPR (m)	PESO (kg)
50A	10	13035	8212
50A	12.5	42247	42247
50A	16	12131	19409
Peso Total			69869 Kg



CORTE A - A
ESCALA 1:20

BRANCA 0.100
AMARELA 0.200
VERDE 0.300
VERMELHA 0.450
AZUL 0.600

HUGO A. MOTA
CONSULTORIA E ENGENHARIA DE PROJETOS
hugomota@oi.com.br

ENC. RESPONSÁVEL
CREA - 4642/D-05

SEINF
Secretaria de Desenvolvimento Urbano e Infra-Estrutura

ENC. CO-AUTORE
CREA - 8231/D-05

Obra: **VADUTO SOBRE A GERMANO FRANK - PROJETO EXECUTIVO**

Assunto: **ARMADURA DAS VIGAS PRINCIPAIS (NERVURAS)**

DATA: **03/2013**

DISSENO: **Max Mello**

ESCALA: **ind.**

FOLHA: **19**