

AC=271°0'0"  
R=200.000  
L=94.829

AC=162°3'52"  
R=200.000  
L=57.239

Lc=60.000  
R=175.000  
A=102.470  
Sc=350°10'40"

AC=111°1'28"  
R=175.000  
L=34.182

Lc=60.000  
R=175.000  
A=102.470  
Sc=9°49'20"

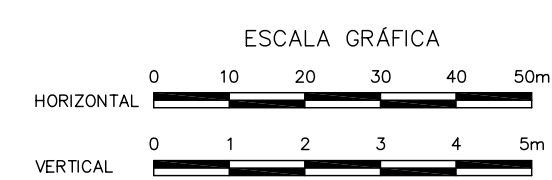
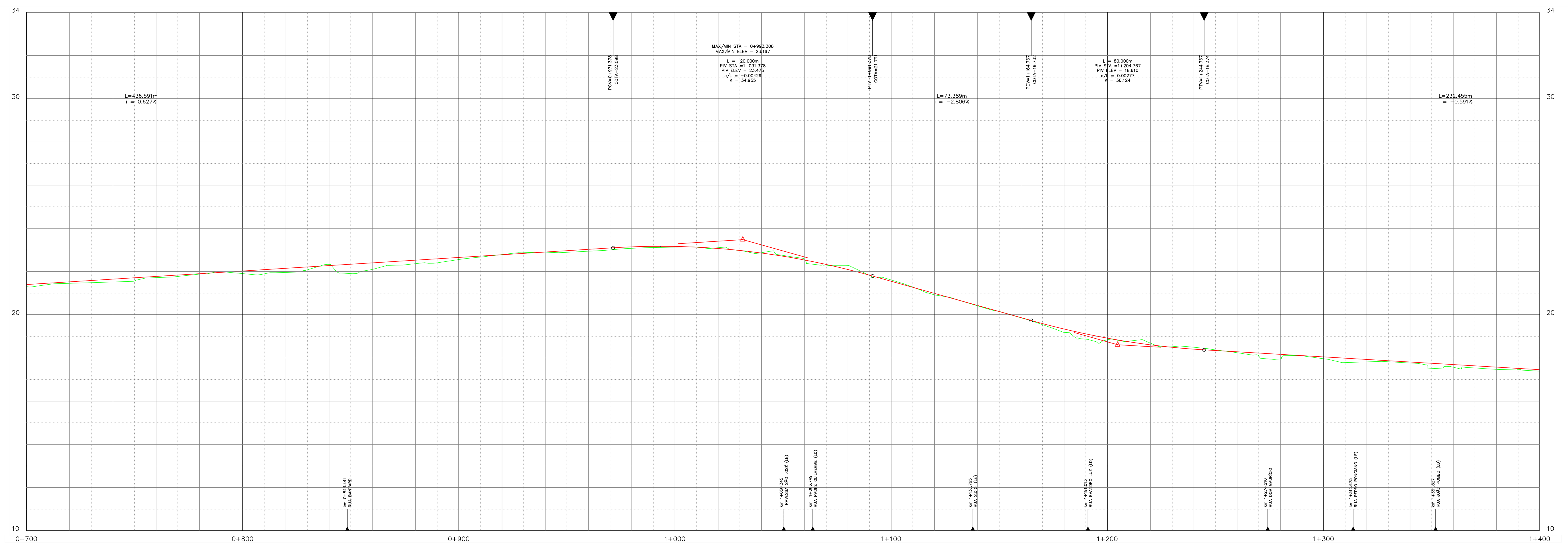
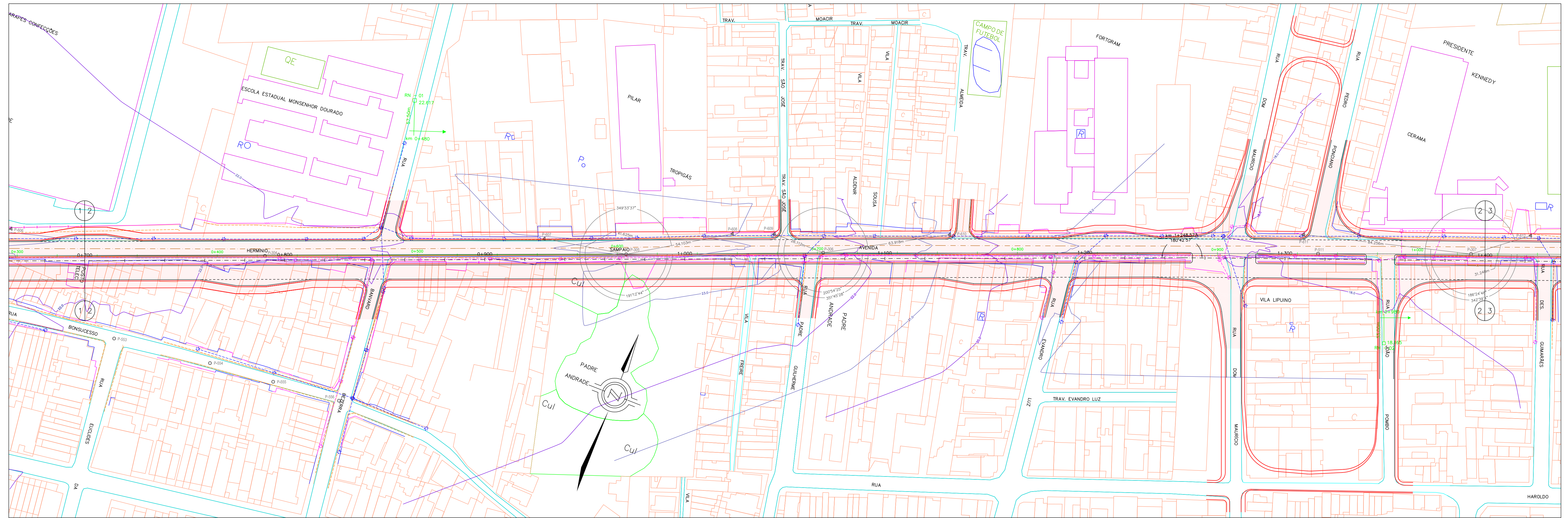
Lc=50.000  
R=450.000  
A=150.000  
Sc=310°59"

AC=44°0'59"  
R=450.000  
L=36.780

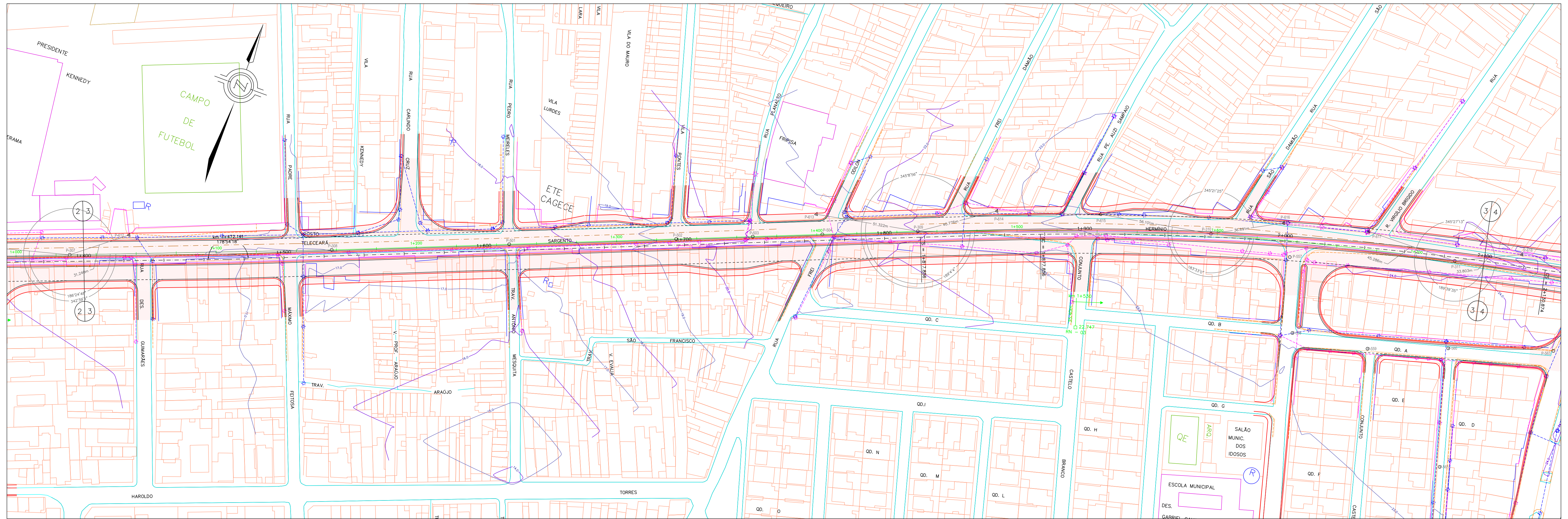
Lc=50.000  
R=450.000  
A=150.000  
Sc=356°49'11"



	PREFEITURA MUNICIPAL DE FORTALEZA SECRETARIA DE INFRA-ESTRUTURA - SEINF	PROJETO GEOMÉTRICO (km 0+000 ao km 0+700)
	PROGRAMA DE TRANSPORTE URBANO DE FORTALEZA - BIDFOR I	LOTE 04
	DATA DEZ/02	ESCALA 1:1000
		FOLHA PG-02/08



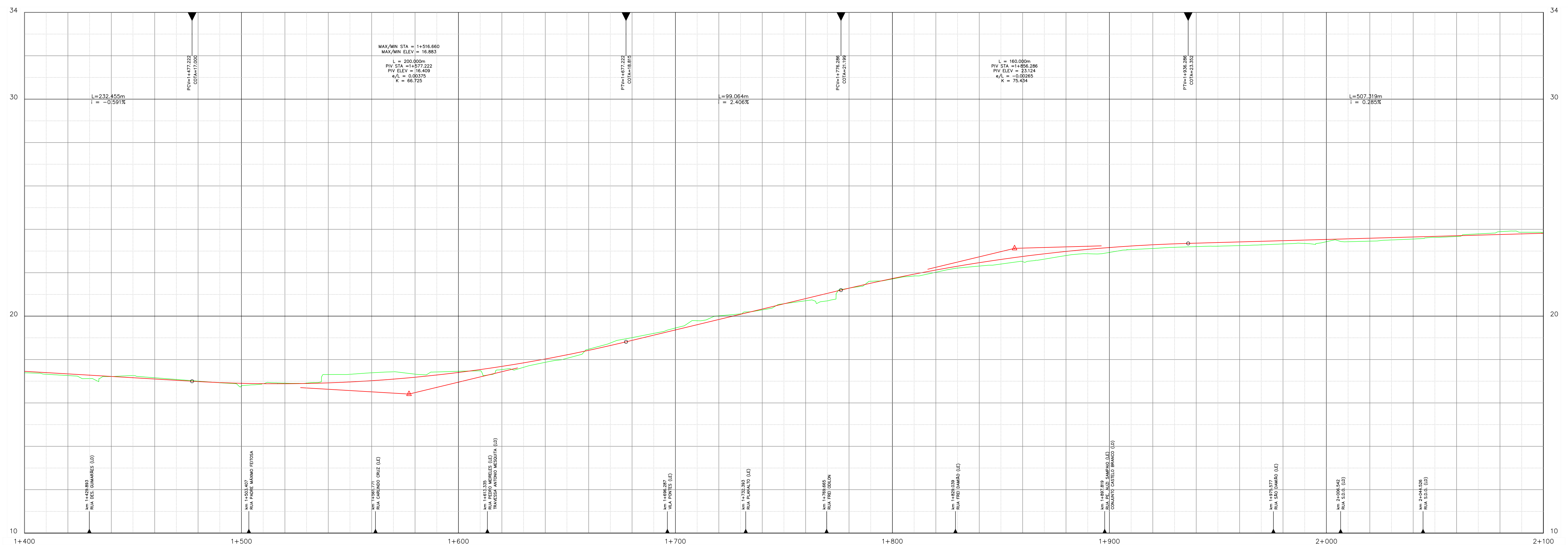
	PREFEITURA MUNICIPAL DE FORTALEZA SECRETARIA DE INFRA-ESTRUTURA - SEINF	PROJETO GEOMÉTRICO (km 0+700 ao km 1+400)	
	PROGRAMA DE TRANSPORTE URBANO DE FORTALEZA - BIDFOR I	LOTE D4	AV. SARGENTO HERMINIO
	DATA DEZ/02	ESCALA 1:1000	FOLHA PG-03/08



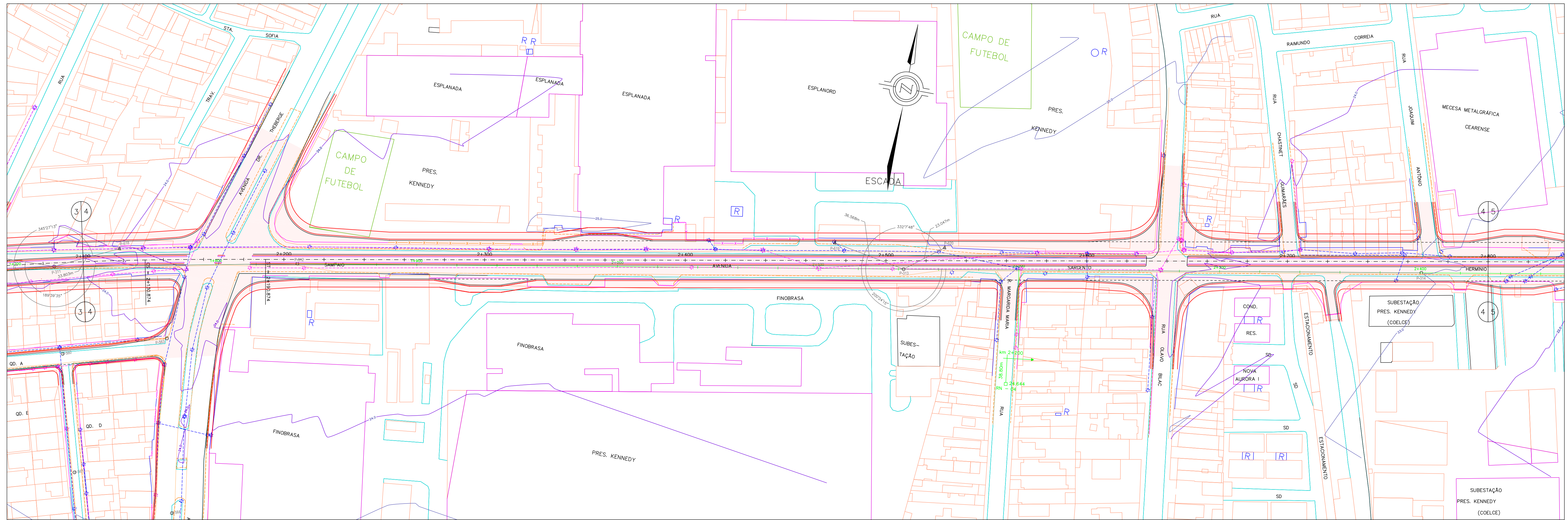
$L=60,000$   
 $R=1525,000$   
 $A=302,480$   
 $Sc=17'38"$

$AC=9'30'22"$   
 $R=1525,000$   
 $L=253,018$

$L=60,000$   
 $R=1525,000$   
 $A=302,480$   
 $Sc=358'52'22"$

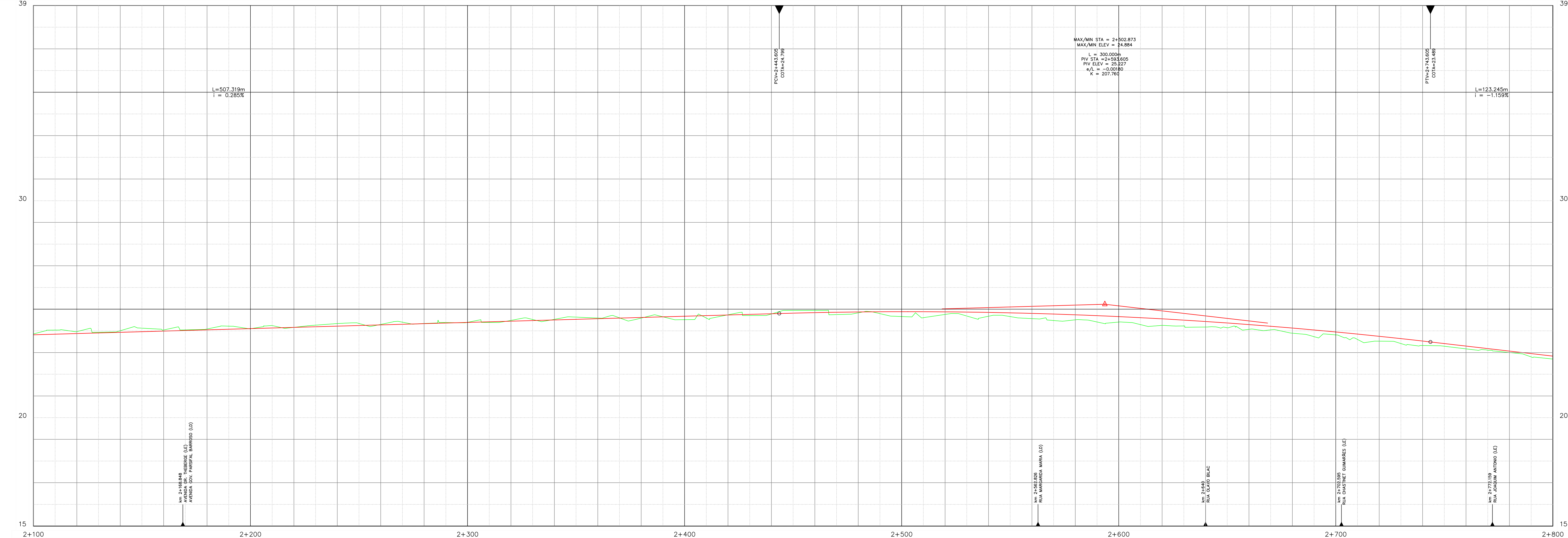


	PREFEITURA MUNICIPAL DE FORTALEZA SECRETARIA DE INFRA-ESTRUTURA - SEINF	PROJETO GEOMÉTRICO (km 1+400 ao km 2+100)
	PROGRAMA DE TRANSPORTE URBANO DE FORTALEZA - BIDFOR I	LOTE 04
NBR Engenheiros Consultores Ltda.	DATA DEZ/02	ESCALA 1:1000
		FOLHA PG-04/08

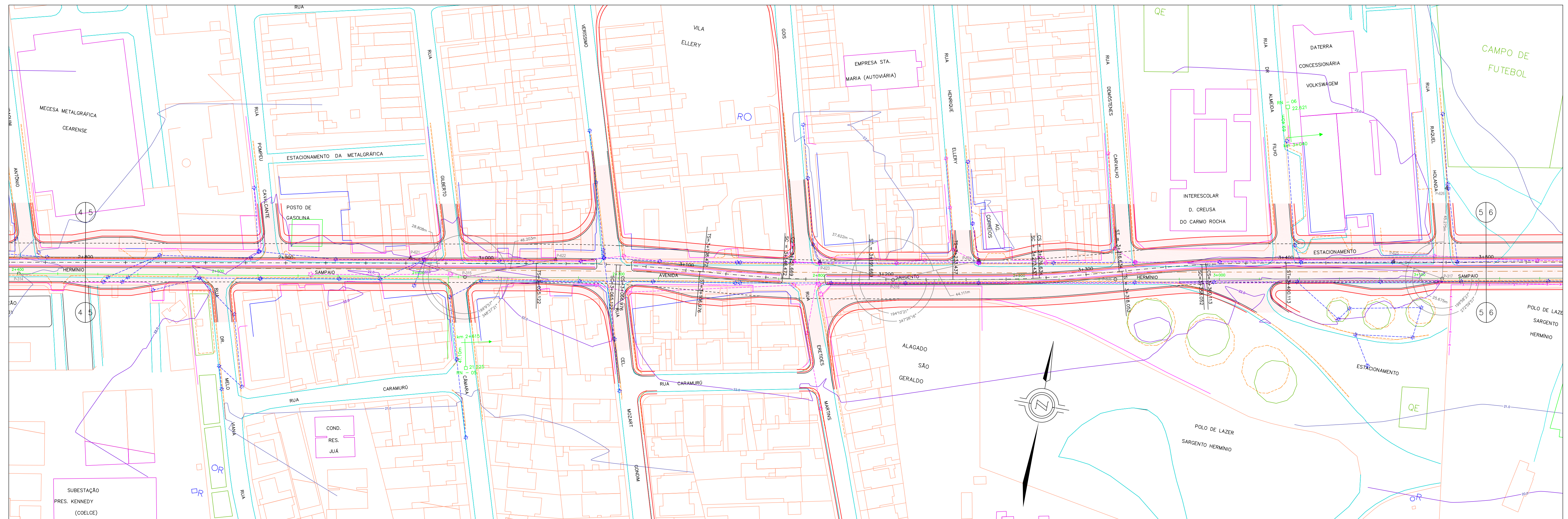


$AC=9^{\circ}30'22''$   
 $R=1525,000$   
 $L=253,018$

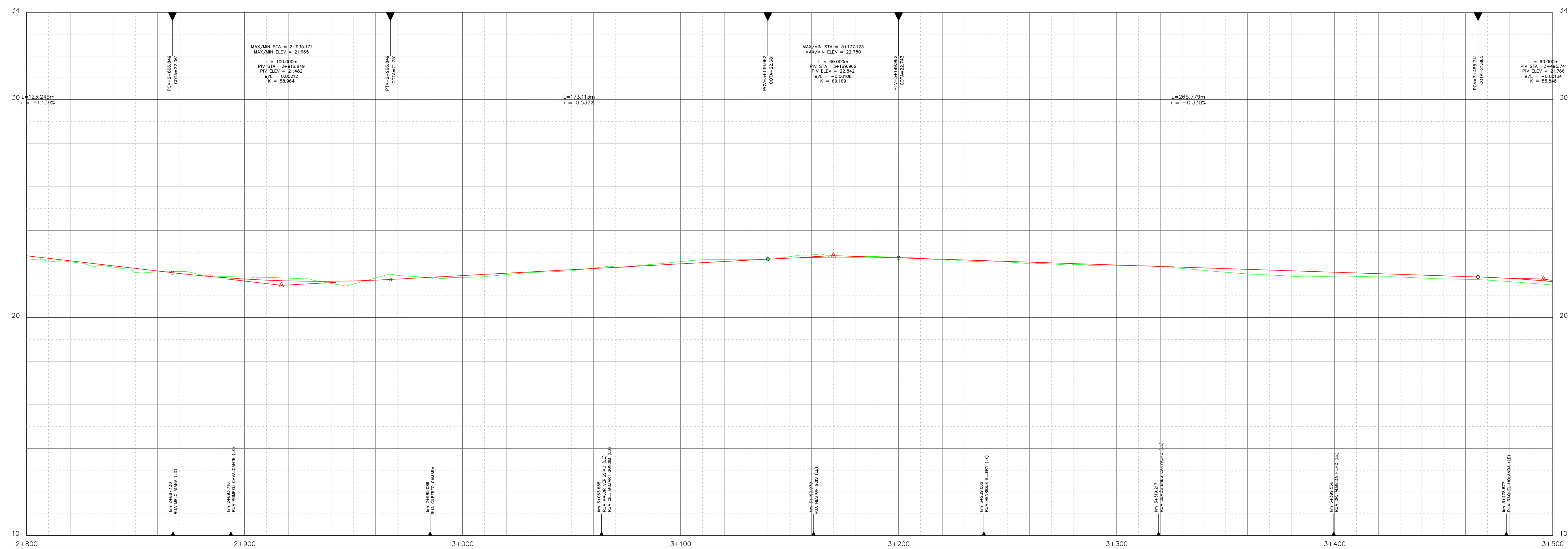
$Lc=60,000$   
 $R=1525,000$   
 $A=302,490$   
 $Sc=358^{\circ}52'22''$



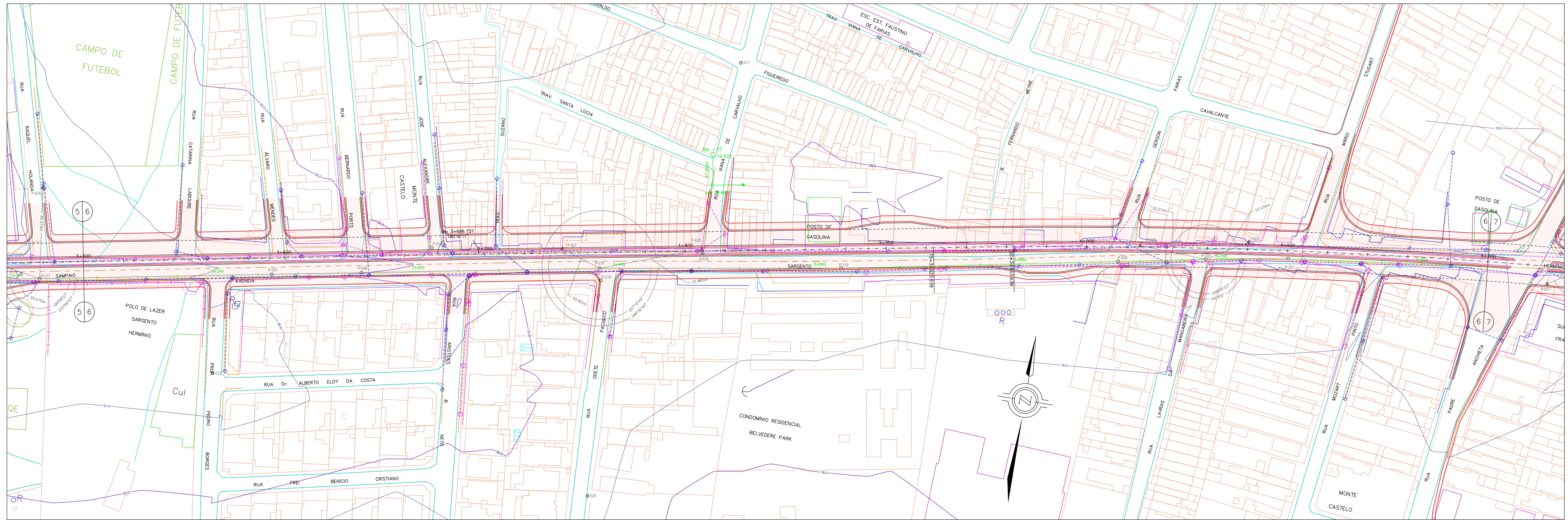
	PREFEITURA MUNICIPAL DE FORTALEZA SECRETARIA DE INFRA-ESTRUTURA - SEINF	PROJETO GEOMÉTRICO (km 2+100 ao km 2+800)
	PROGRAMA DE TRANSPORTE URBANO DE FORTALEZA - BIDFOR I	LOTE D4
	DATA DEZ/02	ESCALA 1:1000
		FOLHA PG-05/08



Lc=40,000 R=450,000 A=134,164 Sc=2'32'47"	AC=0°14'10" R=450,000 L=1,854	Lc=40,000 R=450,000 A=134,164 Sc=357'27'13"	Lc=40,000 R=450,000 A=134,164 Sc=357'27'13"	AC=0°24'25" R=450,000 L=3,197	Lc=40,000 R=450,000 A=134,164 Sc=357'27'13"	AC=0°24'25" R=450,000 A=134,164 L=3,197	Lc=40,000 R=450,000 A=134,164 Sc=2'32'47"	Lc=40,000 R=450,000 A=134,164 Sc=2'32'47"	AC=0°15'45" R=450,000 L=2,081	Lc=40,000 R=450,000 A=134,164 Sc=357'27'13"
--	-------------------------------------	--	--	-------------------------------------	--	--	--	--	-------------------------------------	--

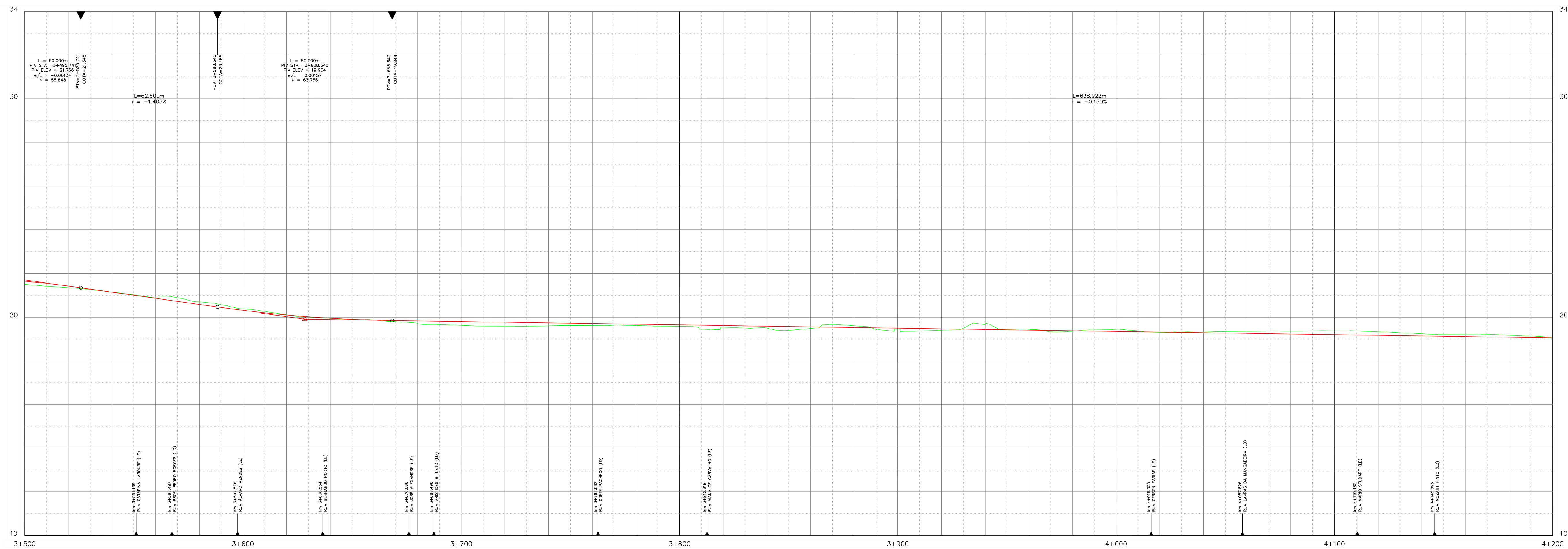


	PREFEITURA MUNICIPAL DE FORTALEZA SECRETARIA DE INFRA-ESTRUTURA - SEINF	PROJETO GEOMÉTRICO (km 2+800 ao km 3+500)
	PROGRAMA DE TRANSPORTE URBANO DE FORTALEZA - BIDFOR I	LOTE D4
NBR Engenharia Consultores Ltda.	DATA DEZ/02	ESCALA 1:1000
		FOLHA PG-06/08

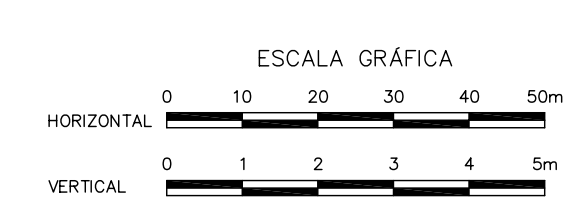
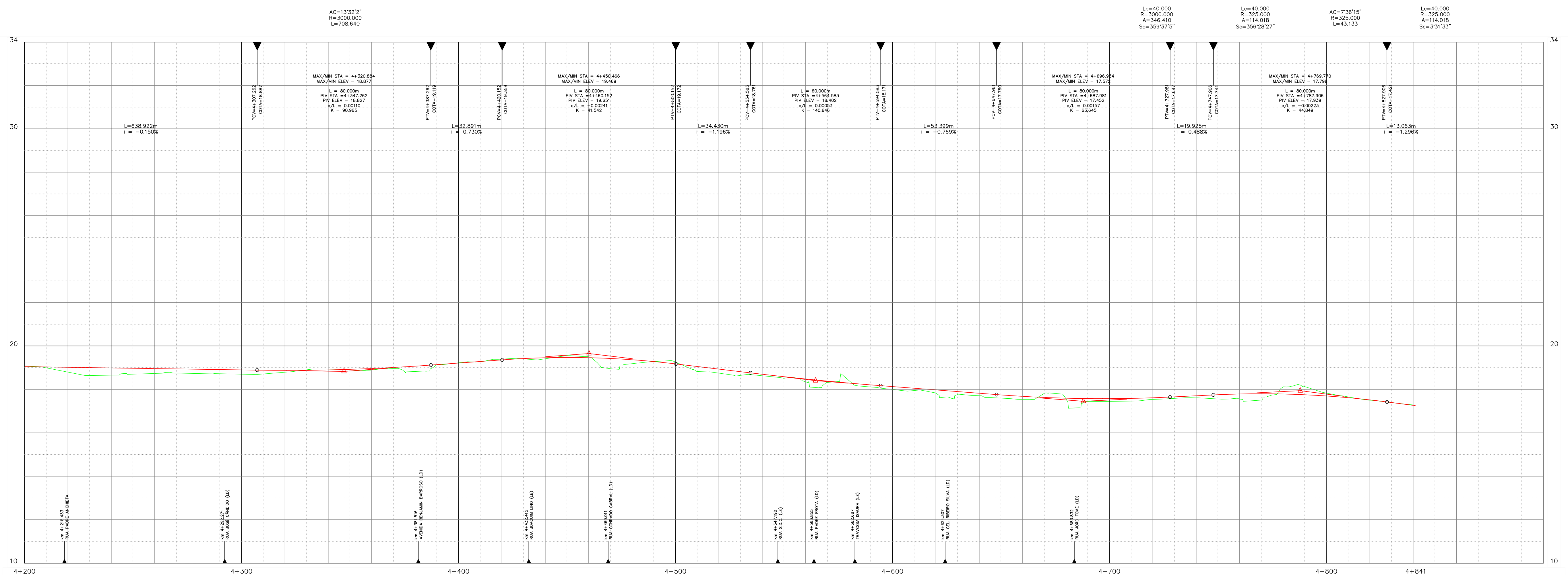
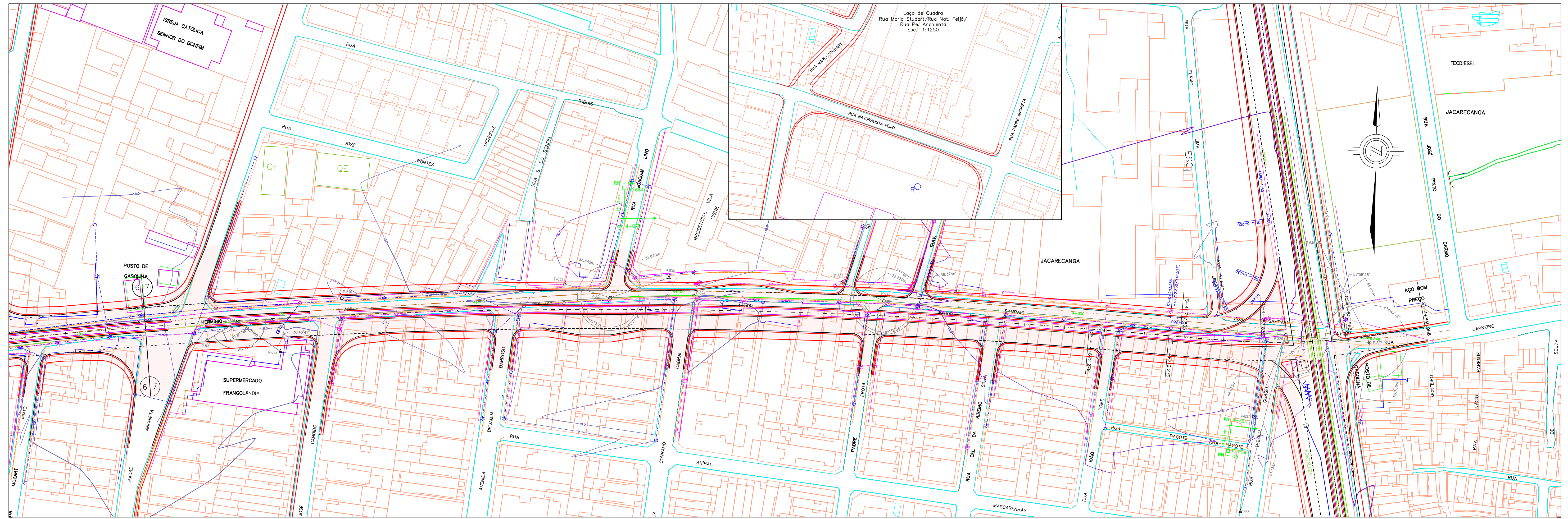


$L_c = 40,000$   
 $R = 3000,000$   
 $A = 346,410$   
 $S_c = 0'22'55''$

$AC = 1'33'27''$   
 $R = 3000,000$   
 $L = 708,640$



	PREFEITURA MUNICIPAL DE FORTALEZA SECRETARIA DE INFRA-ESTRUTURA - SEINF	PROJETO GEOMÉTRICO (km 3+500 ao km 4+200)
	PROGRAMA DE TRANSPORTE URBANO DE FORTALEZA - BIDFOR I	LOTE D4
NBR Engenharia Consultores Ltda.	DATA DEZ/02	ESCALA 1:1000
		FOLHA PG-07/08



**PREFEITURA MUNICIPAL DE FORTALEZA**  
 SECRETARIA DE INFRA-ESTRUTURA - SEINF  
 PROGRAMA DE TRANSPORTE URBANO DE FORTALEZA - BIDFOR I

**PROJETO GEOMÉTRICO**  
 (km 4+200 ao km 4+840.968)  
 LOTE 04  
 AV. SARGENTO HERMINIO

DATA: DEZ/02  
 ESCALA: 1:1000  
 FOLHA: PG-08/08

**NBR Engenharia Consultores Ltda.**