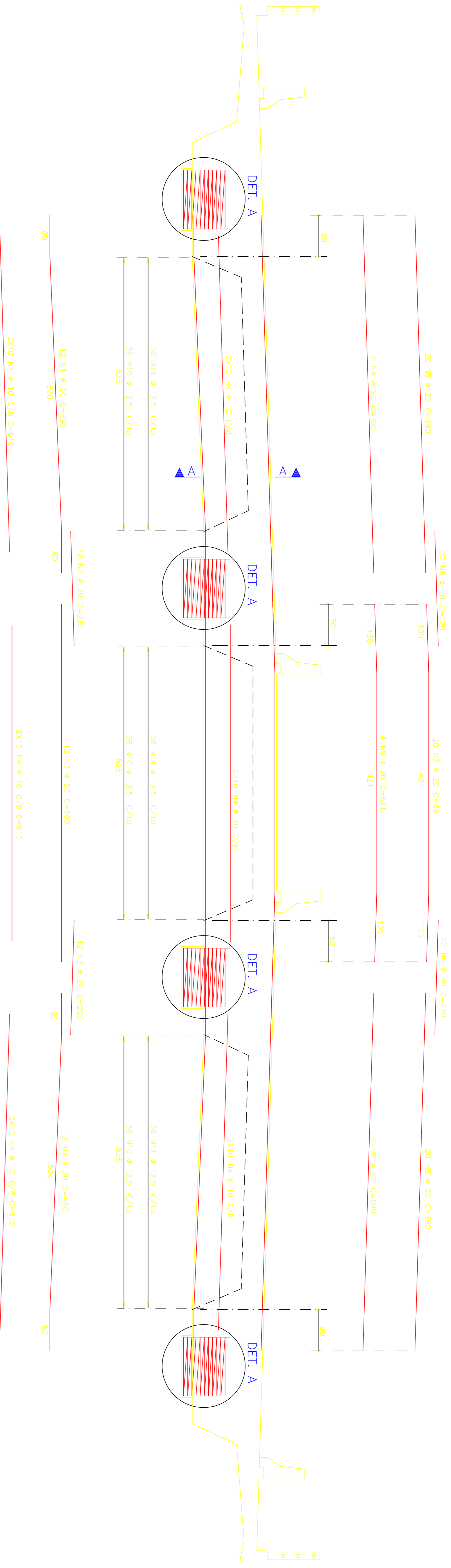


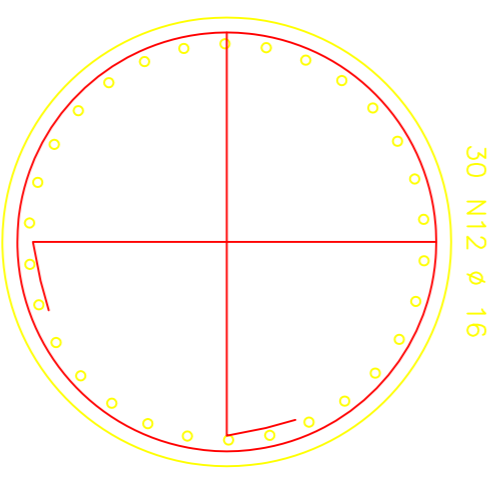
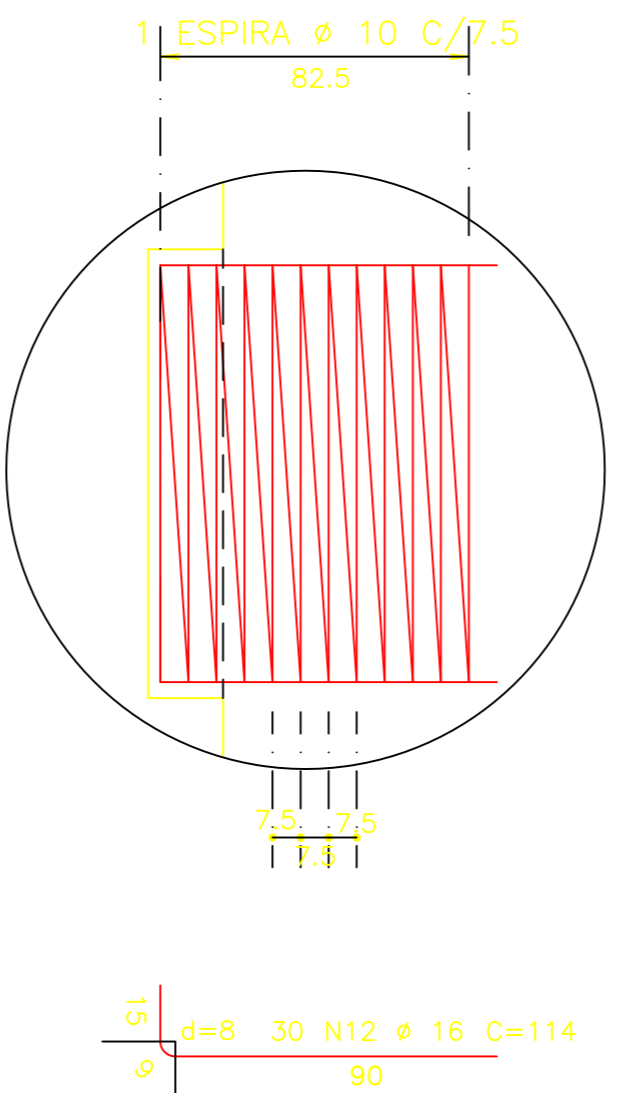
ARMADURA DAS VIGAS TRANSVERSAIS V2 120X135 2X

ESCALA 1:40

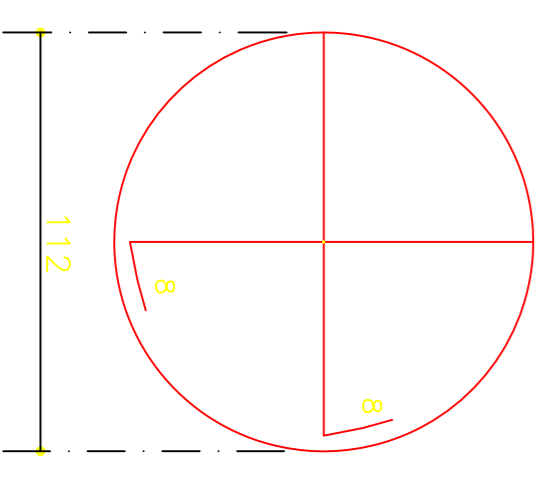


ARMADURA NO DETALHE A (4X)

ESCALA 1:20

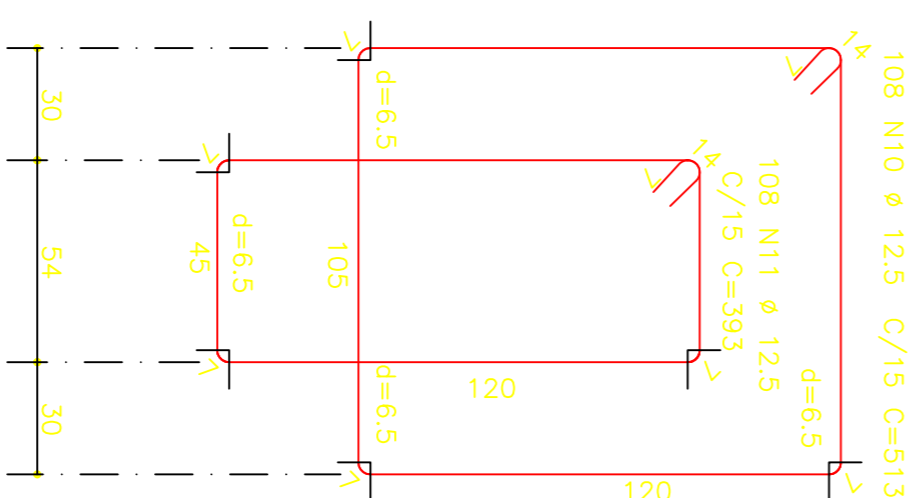
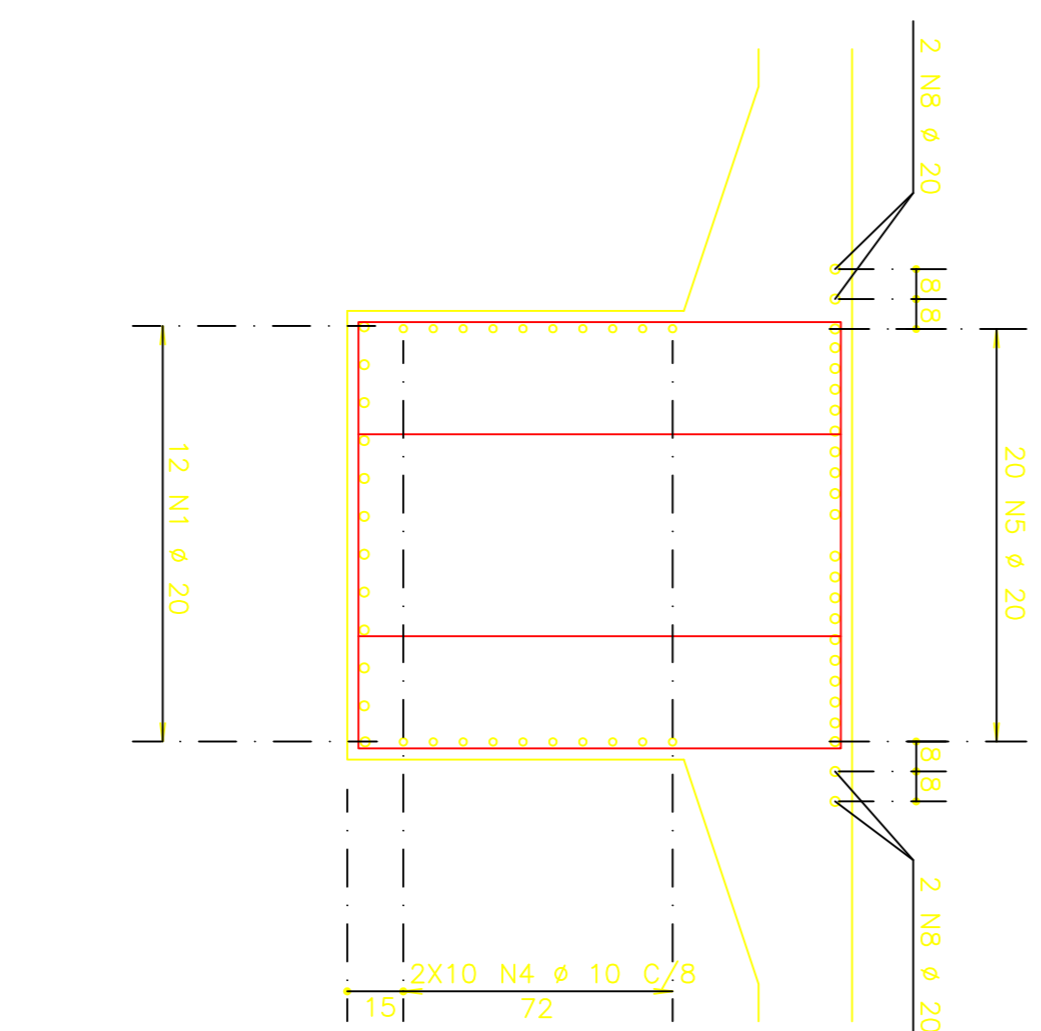


1 ESPIRA N13 ϕ 10 C/7.5 C=4460



CORTE A - A

ESCALA 1:20



| ACO | POS | BIT (mm) | QUANT | COMPRIMENTO (cm) | UNID | TOTAL (kg) |
|---|----------|-----------|-----------|------------------|------|------------|
| ARMADURA DAS VIGAS TRANSVERSAIS V2 120X135 (X2) | | | | | | |
| S0A | 1 | 20 | 48 | 690 | | 33120 |
| S0A | 2 | 20 | 48 | 220 | | 10560 |
| S0A | 3 | 20 | 24 | 220 | | 5280 |
| S0A | 4 | 20 | 12 | 690 | | 8280 |
| S0A | 5 | 20 | 80 | 690 | | 55200 |
| S0A | 6 | 20 | 80 | 220 | | 17600 |
| S0A | 7 | 20 | 40 | 691 | | 27640 |
| S0A | 8 | 20 | 16 | 690 | | 11040 |
| S0A | 9 | 20 | 8 | 691 | | 5528 |
| S0A | 10 | 12.5 | 216 | 513 | | 110808 |
| S0A | 11 | 12.5 | 216 | 393 | | 84888 |
| S0A | 12 | 16 | 240 | 114 | | 27360 |
| S0A | 13 | 10 | 8 | 4460 | | 35680 |
| RESUMO ACO CA 50-60 | | | | | | |
| ACO | BIT (mm) | COMPR (m) | PESO (kg) | | | |
| S0A | 10 | 1089 | 686 | | | |
| S0A | 12.5 | 1957 | 1957 | | | |
| S0A | 16 | 274 | 438 | | | |
| S0A | 20 | 1772 | 4431 | | | |
| Peso Total | | | 7512 | kg | | |

NOTAS

- 1 - fck=30MPa
- 2 - ACO CA-50
- 3 - COBRIMENTO DA ARMADURA: C=3m

BRANCA 0.100
AMARELA 0.200
VERDE 0.300
VERMELHA 0.450
AZUL 0.600

HUGO A. MOTA
CONSULTORIA E ENGENHARIA DE PROJETOS
hugomota@oi.com.br

ENC. RESPONSÁVEL
ENC. CO-AUTOR
ENC. RESPONSÁVEL TÉCNICO

00
REV

EMISSÃO INICIAL
DISCRIMINAÇÃO

RES.P.
DATA

SEINF
Prefeitura de
Fortaleza

SECRETARIA DE DESENVOLVIMENTO URBANO E INFRA-ESTRUTURA

Obra: **VADUTO SOBRE A GERMANO FRANK - PROJETO EXECUTIVO**

Assunto: **ARMADURA DAS VIGAS TRANSVERSAIS V2 120X135**

DATA: **MARÇO/2013**

DESIGNADO: **Max Mello**

ESCALA: **ind.**

FOLHA: **14**