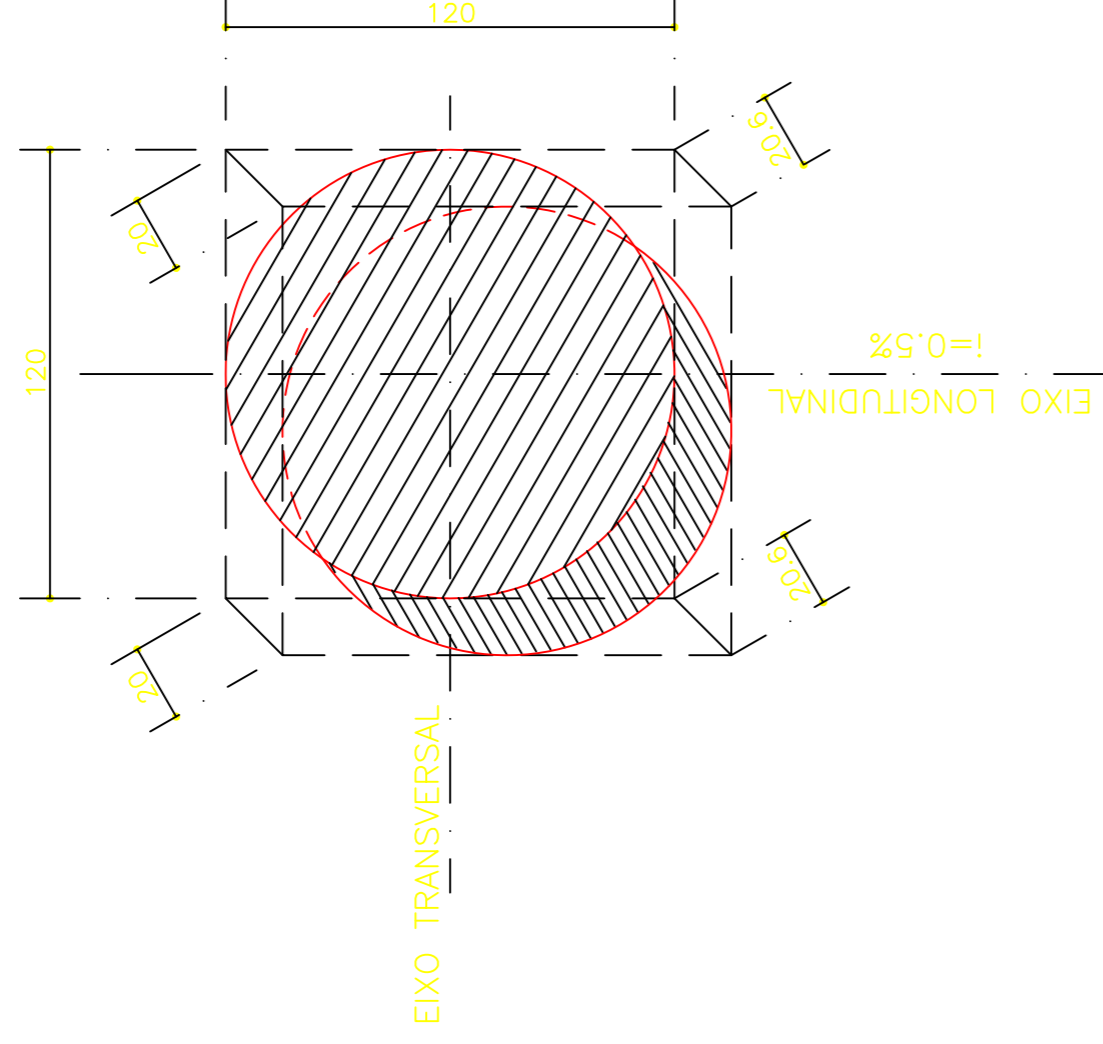


VIADUTO SOBRE A OSÓRIO DE PAIVA

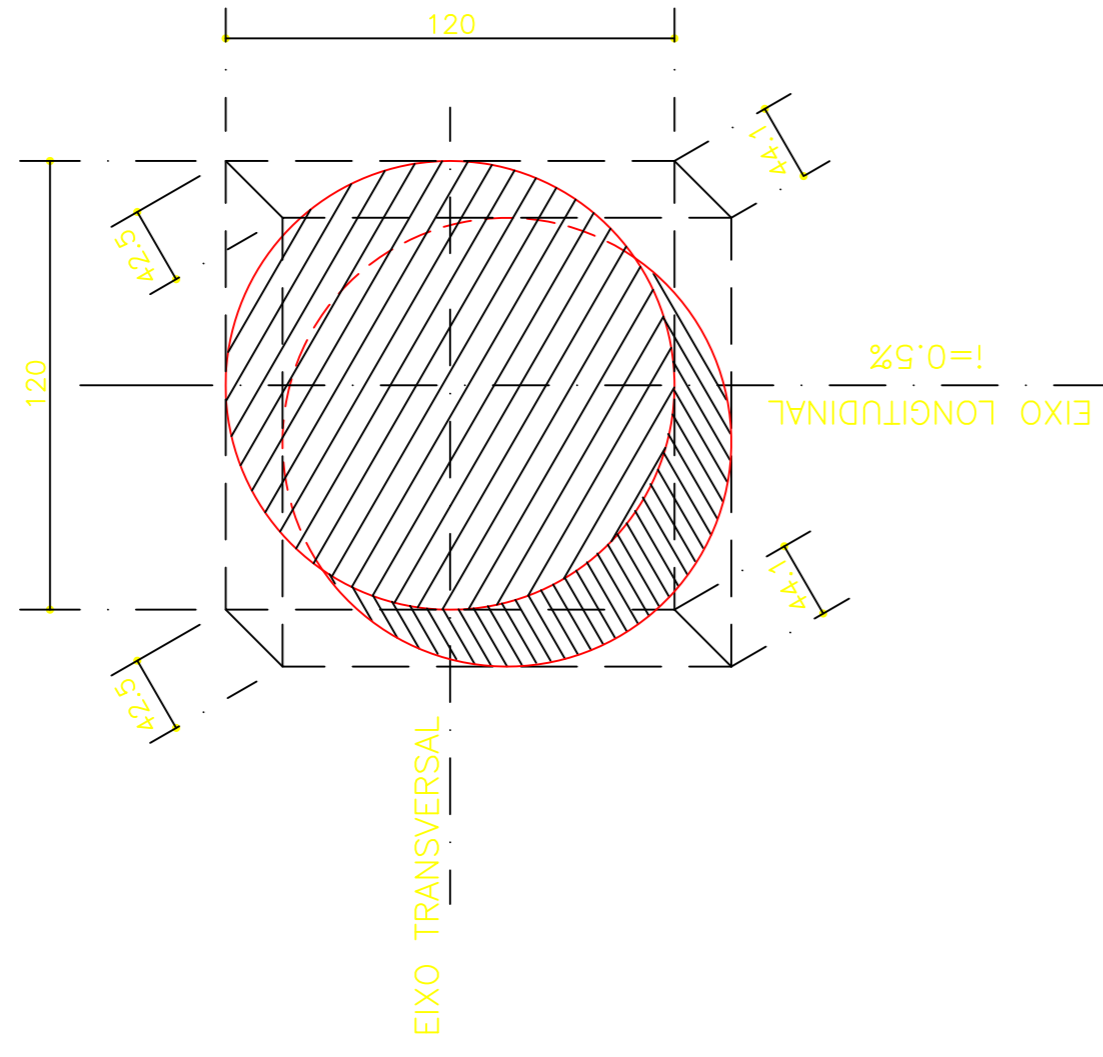
DESENHO ISOMÉTRICO DAS CUNHAS
(EXECUTAR CUNHAS COM SEÇÃO CIRCULAR)

ESCALA 1:20

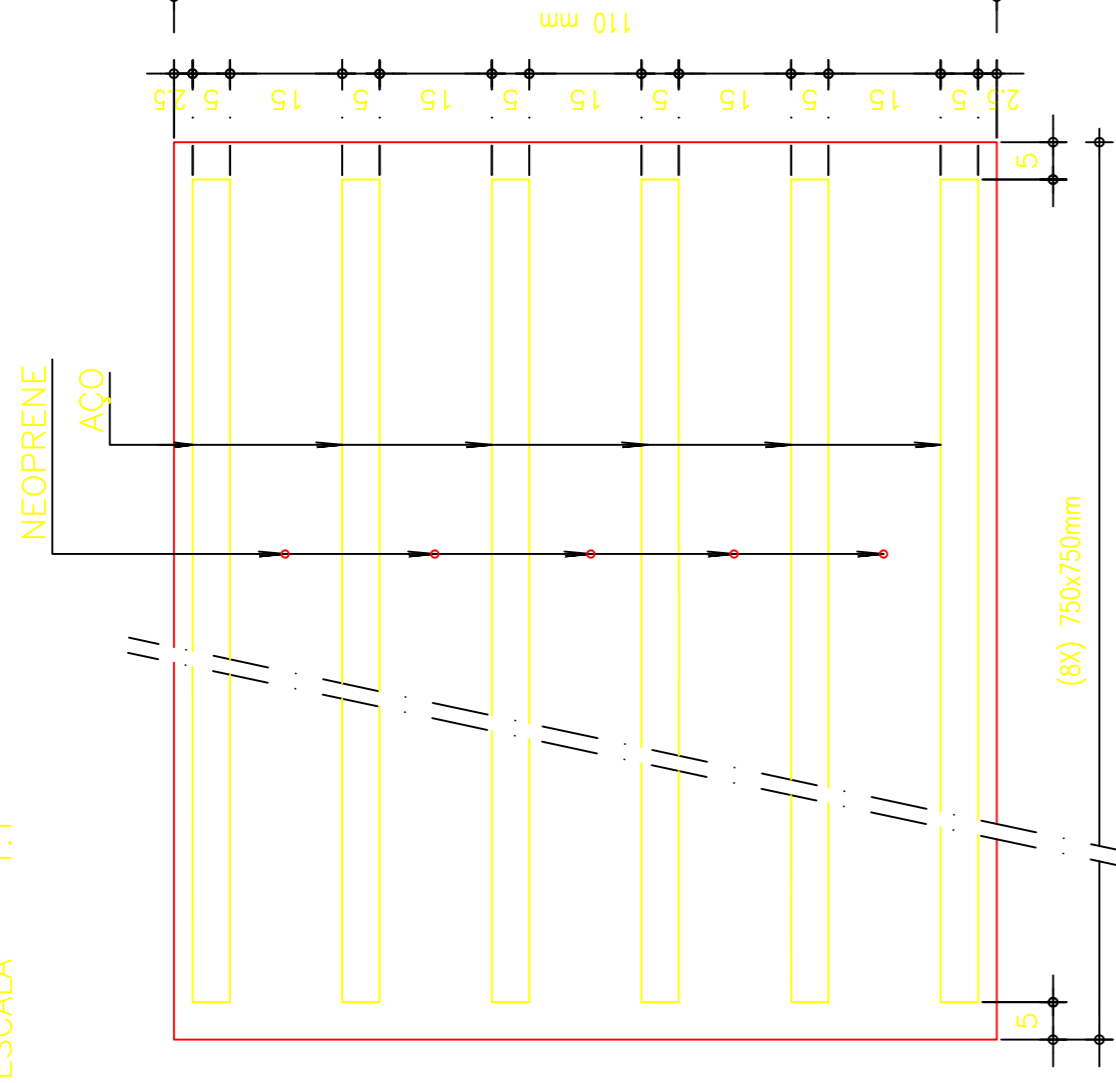
PILARES DE EXTREMIDADE



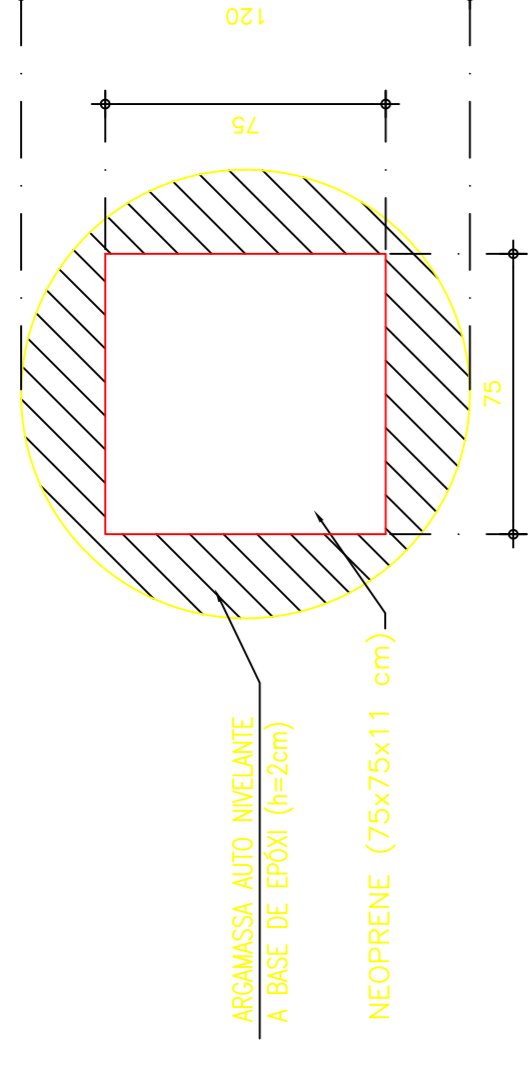
PILARES DE CENTRAIS



DETALHE DOS APARELHOS DE APOIO
ESCALA 1:1

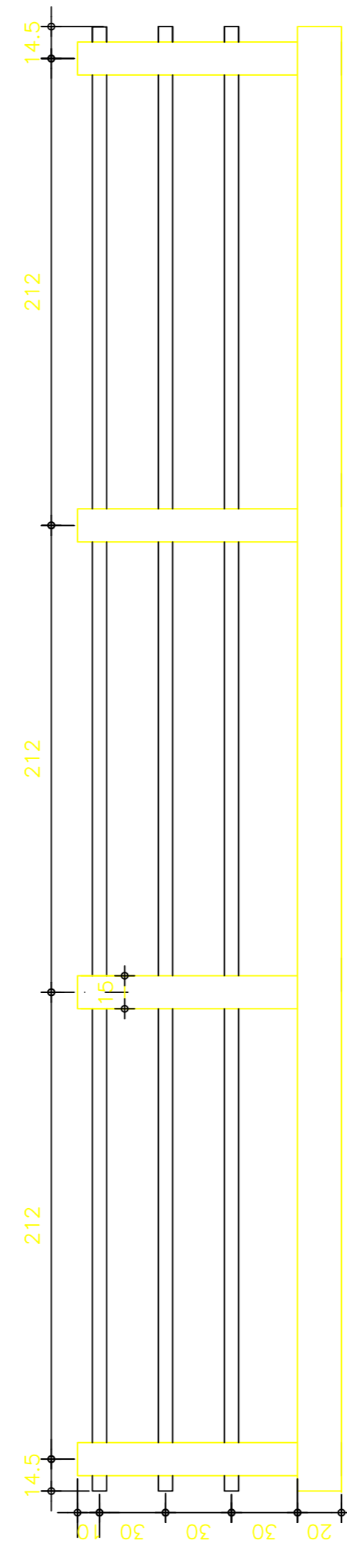


LOCAÇÃO DO APARELHO DE APOIO NO PILAR
NEOPRENE NO PILAR PT1:
ESCALA 1:20



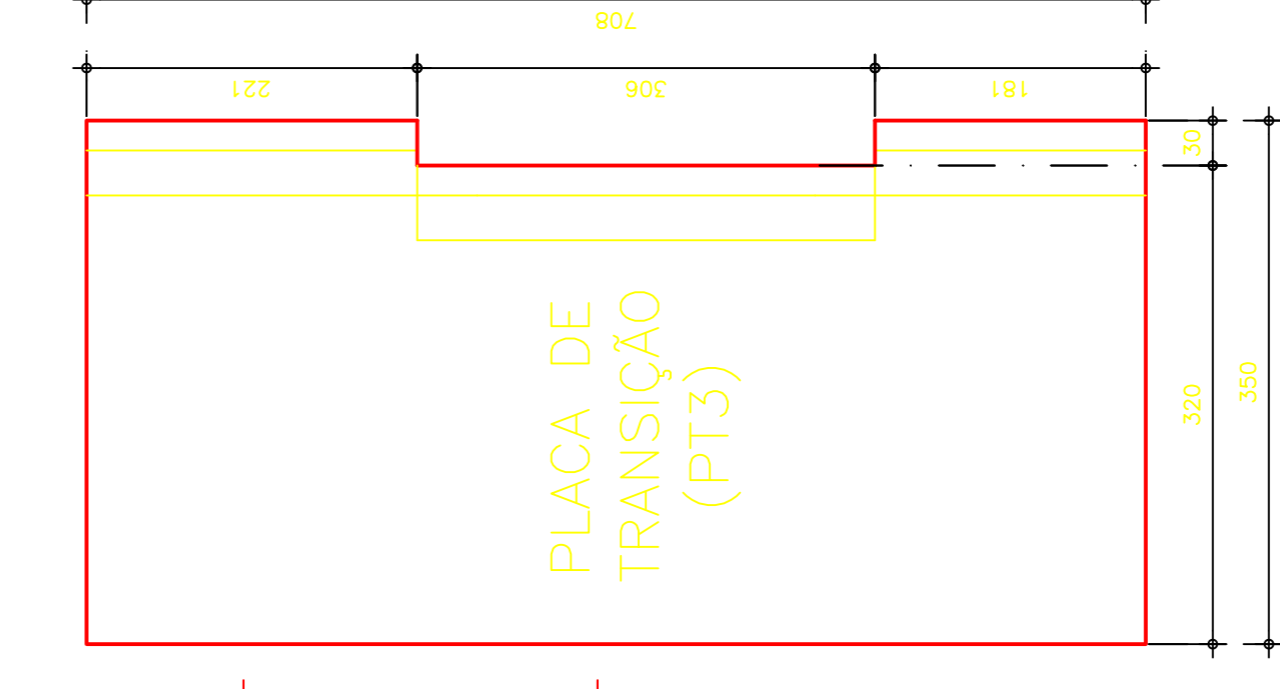
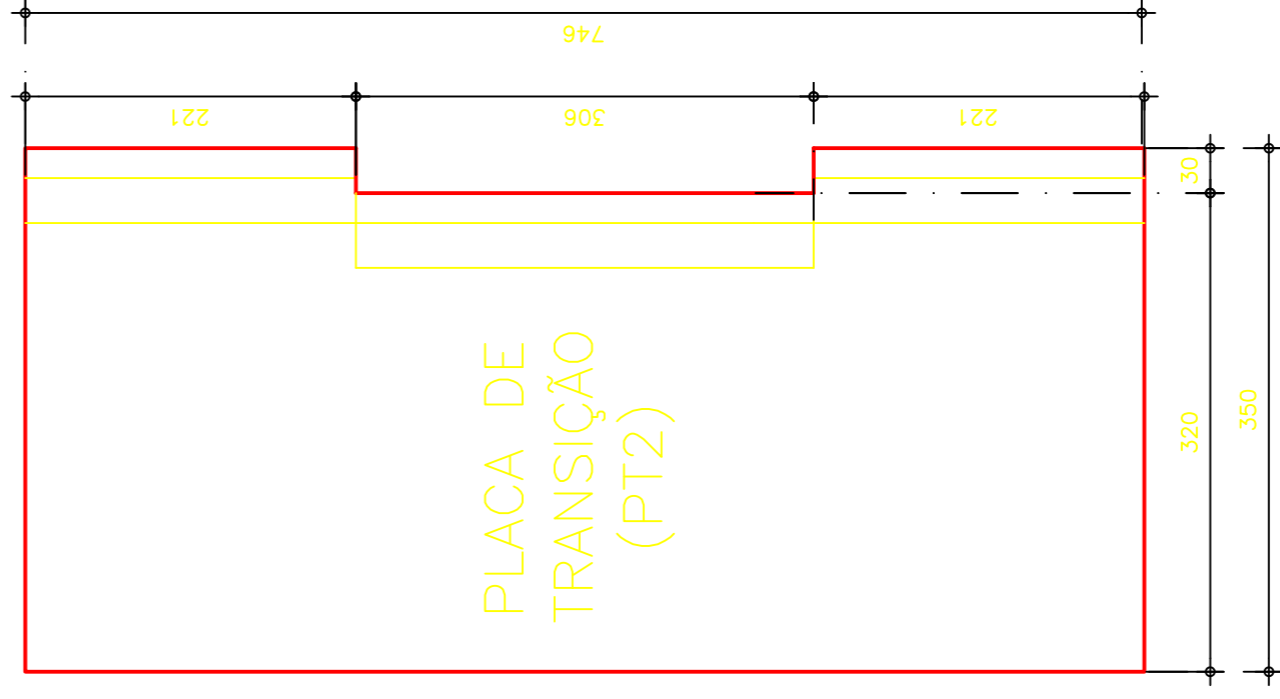
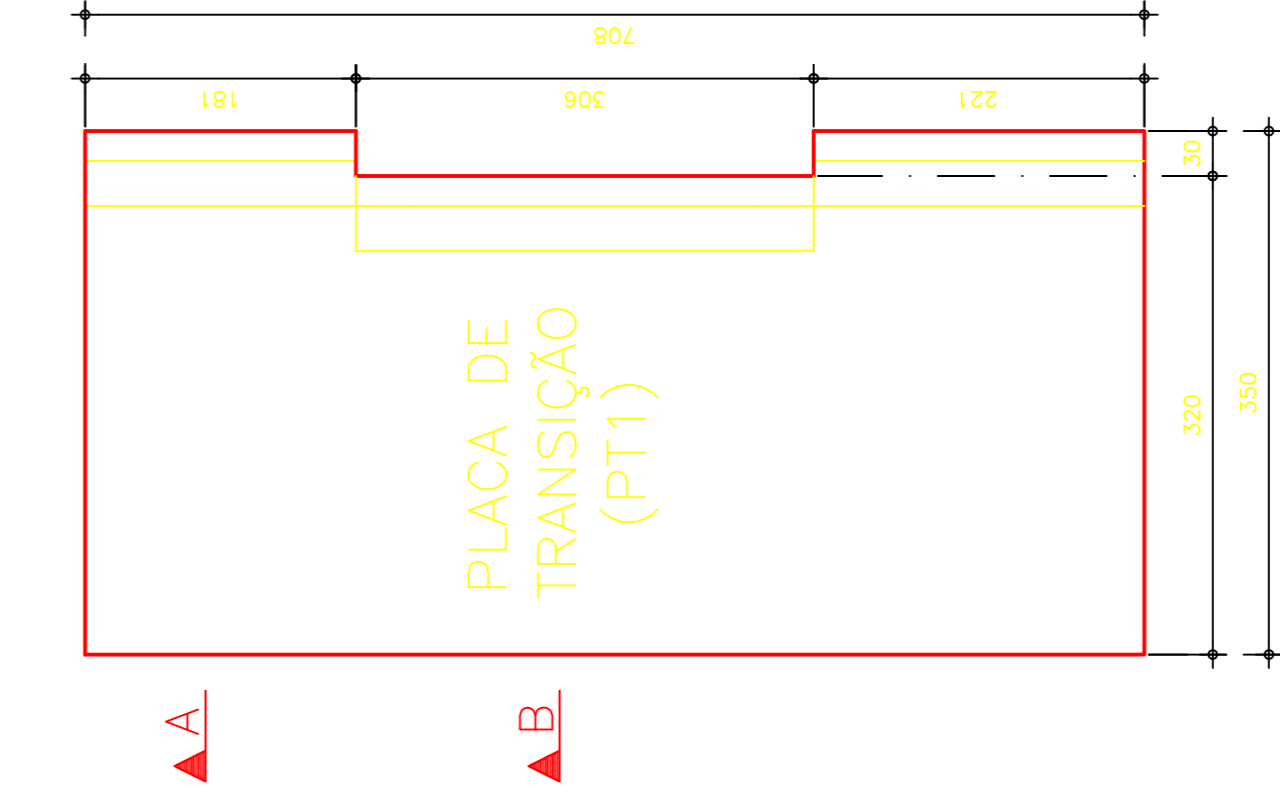
Guarda Corpo (12x)

ESCALA 1:25

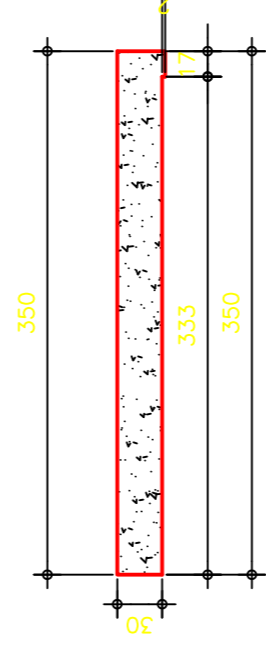


LAJE DE TRANSIÇÃO
ESCALA 1:50

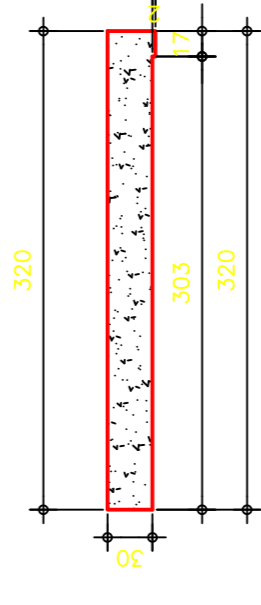
ESCALA 1:50



CORTE A - A
ESCALA 1:50

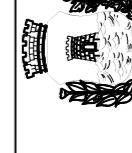


CORTE B - B
ESCALA 1:50



NOTAS

1. CONCRETO
fck= 30 MPa
2. AÇO CA-50A - CP-190RB
3. COBRIMENTOS
Super/Mesoestrutura: c=30mm
Infraestrutura:.....: c=40mm



Prefeitura de
Fortaleza

SEINF

SECRETARIA DE DESENVOLVIMENTO URBANO E INFRA-ESTRUTURA

Obra: VIADUTO SOBRE A OSÓRIO DE PAIVA - PROJETO EXECUTIVO

DESENHO	DATA
Max	MARÇO/2013
Indice	FOLHA
	11

Assunto: DETALHES

FA HUGO A. MOTA
CONSULTORIA E ENGENHARIA DE PROJETOS
hugomota@ortinet.com.br

ENG. CO-AUTOR

ENG. ORÇÃO E MPA

CREA - 8277/D-CE

ENG. RESPONSÁVEL

ENG. HUGO A. MOTA

CREA - 4242/D-CE

REV.	EMISSÃO INICIAL	DISCRIMINAÇÃO	RESP.	DATA
00				05/2013