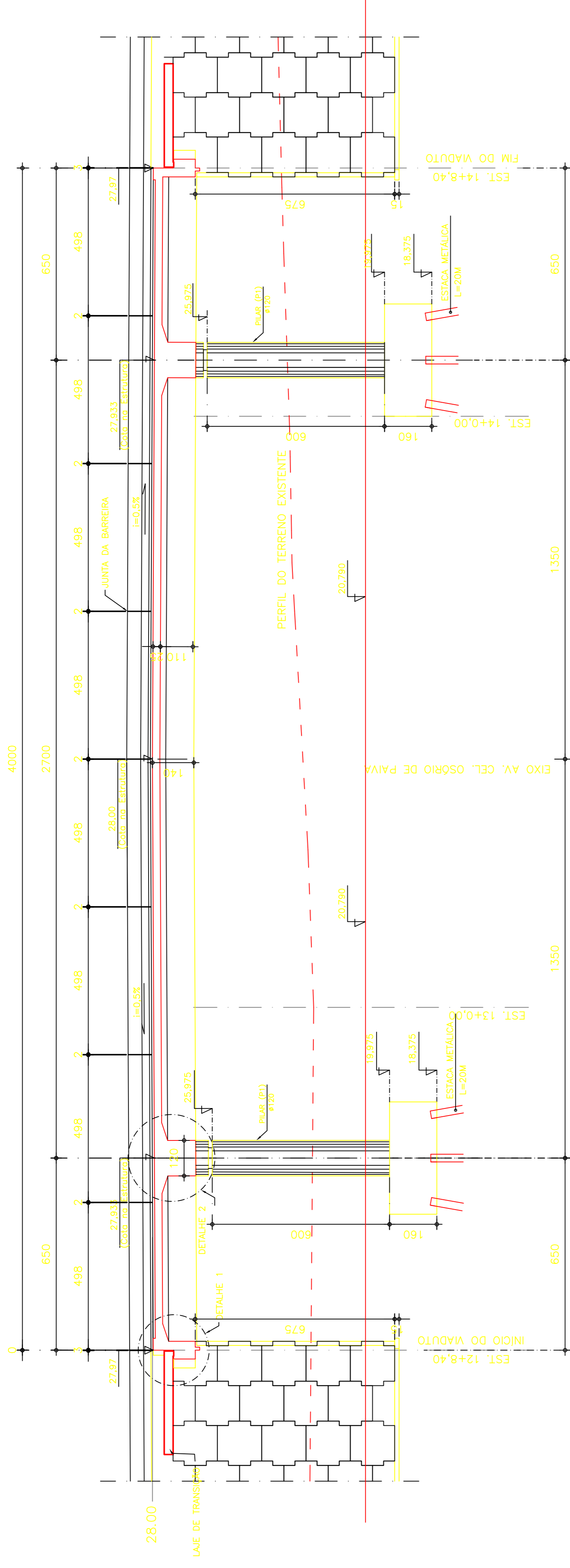


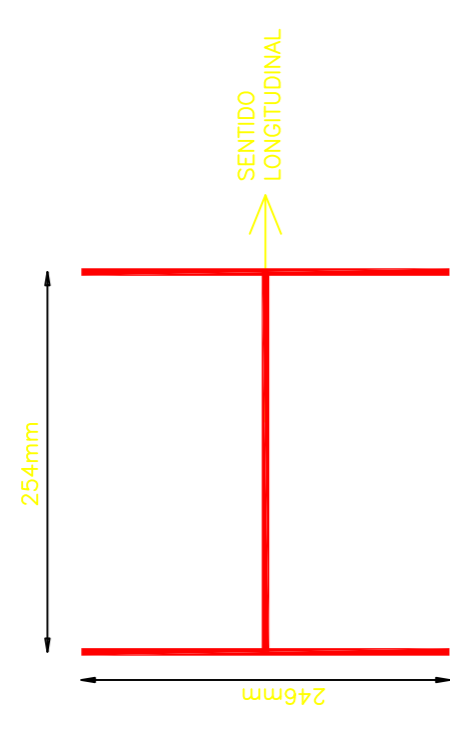
# VIADUTO SOBRE A OSÓRIO DE PAIVA

PERFIL LONGITUDINAL

ESCALA 1:100

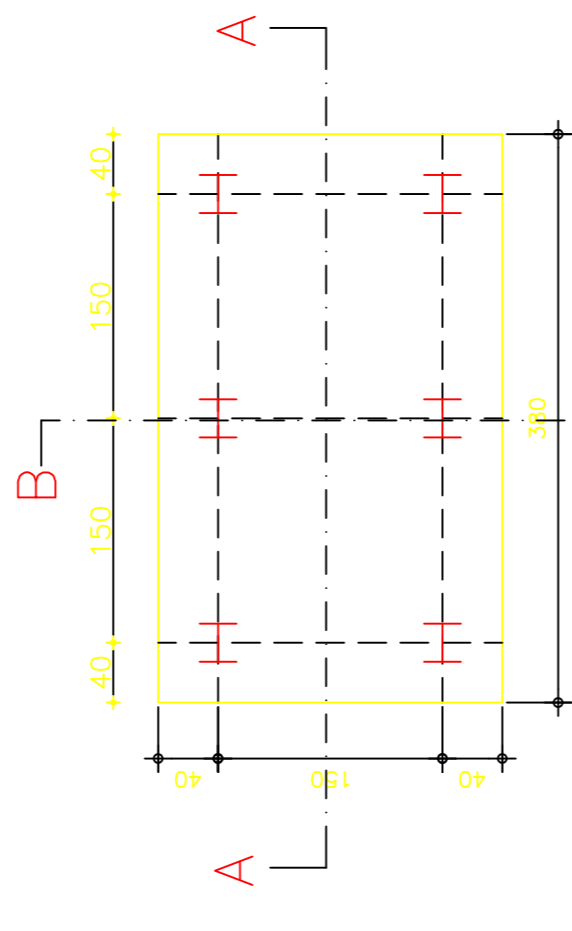


**ESTACA METÁLICA**  
 PERFIL GERDAU HP 250X73  
 AÇO ASTM A 572 Grau 50  
 CAPACIDADE DE CARGA DA ESTACA = 120 tf  
 COMPRIMENTO ESTIMADO DA ESTACA = 18M  
 NECA=2,6mm



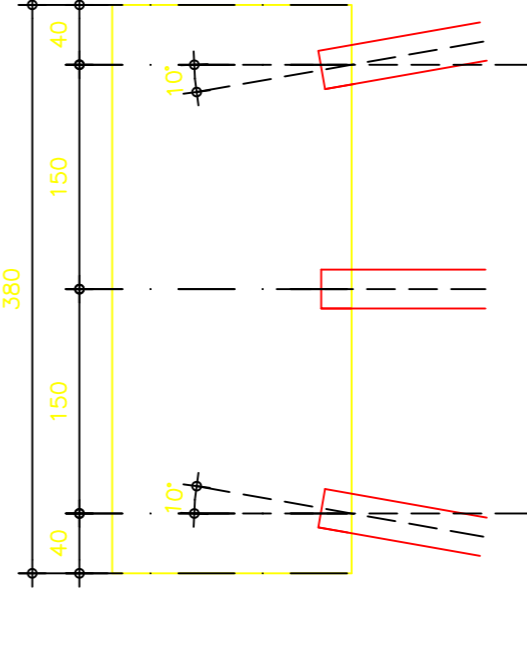
## BLOCOS DE COROAMENTO

ESCALA 1:50  
 BLOCO (B1): 6 ESTACAS  
 H=160  
 6 ESTACAS HP250X62



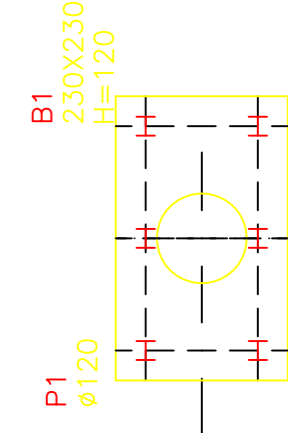
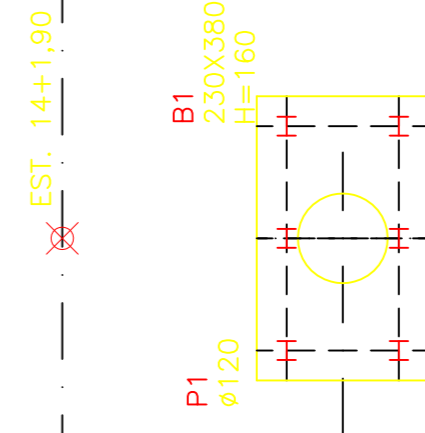
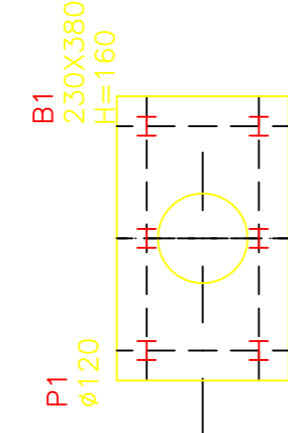
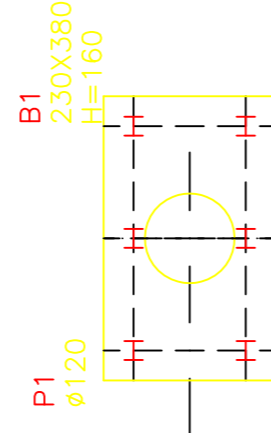
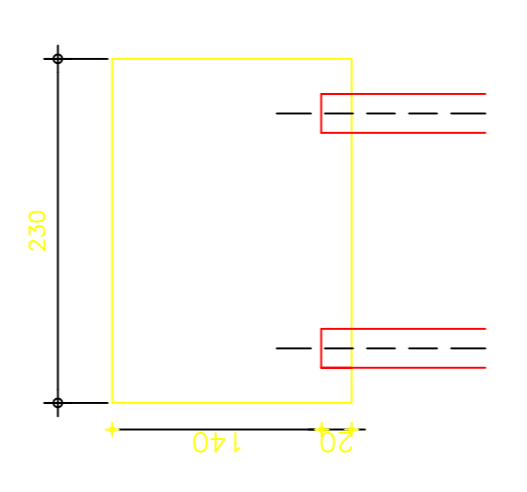
## CORTE A-A

ESCALA 1:50



## CORTE B-B

ESCALA 1:50



## NOTAS

1. CONCRETO  
 $f_{ck} = 30 \text{ MPa}$
2. AÇO CA-50A - CP-190RB
3. COBRIMENTOS  
 Super/Mesoestrutura:  $c = 30 \text{ mm}$   
 Infraestrutura:  $c = 40 \text{ mm}$

**Fortaleza**  
 Prefeitura de  
**SEINF**  
 SECRETARIA DE DESENVOLVIMENTO URBANO E INFRA-ESTRUTURA

Obra: VIADUTO SOBRE A OSÓRIO DE PAIVA - PROJETO EXECUTIVO  
 Assunto: LOCAÇÃO DAS FUNDAÇÕES

DESENHO	DATA
Rev. 01	MAR/05/2013
ESCALA	FOLHA
1:50	04

**HUGO A. MOTA**  
 CONSULTORIA E ENGENHARIA DE PROJETOS  
 hugomota@ortinet.com.br

REV.	EMISSÃO INICIAL	DISCRIMINAÇÃO	RESP.	DATA
00				05/2013

## LOCAÇÃO DAS FUNDAÇÕES

ESCALA 1:100

